

For Research Use Only

CGNL1 Polyclonal antibody, PBS Only

Catalog Number:18031-1-PBS



Basic Information

Catalog Number:

18031-1-PBS

Source:

Rabbit

Isotype:

IgG

Immunogen Catalog Number:

AG12598

GenBank Accession Number:

BC093827

GeneID (NCBI):

84952

UNIPROT ID:

Q0VF96

Full Name:

cingulin-like 1

Calculated MW:

1302 aa, 149 kDa

Observed MW:

149 kDa

Purification Method:

Antigen affinity purification

Applications

Tested Applications:

WB, IHC, Indirect ELISA

Species Specificity:

human, mouse

Background Information

Storage

Storage:

Store at -80°C.

The product is shipped with ice packs. Upon receipt, store it immediately at -80°C

Storage Buffer:

PBS only, pH7.3

For technical support and original validation data for this product please contact:

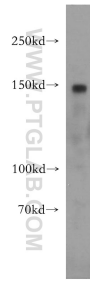
T: 4006900926

E: Proteintech-CN@ptglab.com

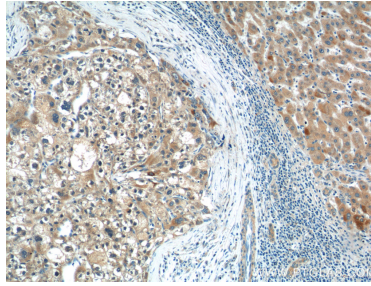
W: ptgcn.com

This product is exclusively available under Proteintech Group brand and is not available to purchase from any other manufacturer.

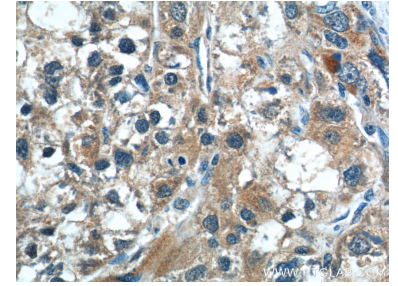
Selected Validation Data



NIH/3T3 cells were subjected to SDS PAGE followed by western blot with 18031-1-AP (CGNL1 antibody) at dilution of 1:2000 incubated at room temperature for 1.5 hours. This data was developed using the same antibody clone with 18031-1-PBS in a different storage buffer formulation.



Immunohistochemical analysis of paraffin-embedded human liver cancer tissue slide using 18031-1-AP (CGNL1 Antibody) at dilution of 1:50 (under 10x lens). This data was developed using the same antibody clone with 18031-1-PBS in a different storage buffer formulation.



Immunohistochemical analysis of paraffin-embedded human liver cancer tissue slide using 18031-1-AP (CGNL1 Antibody) at dilution of 1:50 (under 40x lens). This data was developed using the same antibody clone with 18031-1-PBS in a different storage buffer formulation.