

For Research Use Only

# PP11 Polyclonal antibody

Catalog Number: 18002-1-AP

2 Publications



## Basic Information

Catalog Number:

18002-1-AP

Size:

500 µg/ml

Source:

Rabbit

Isotype:

IgG

Immunogen Catalog Number:

AG12494

GenBank Accession Number:

BC074763

GeneID (NCBI):

8909

UNIPROT ID:

P21128

Full Name:

26 serine protease

Calculated MW:

369 aa, 42 kDa

Observed MW:

35-40 kDa

Purification Method:

Antigen affinity purification

Recommended Dilutions:

WB 1:500-1:3000

IHC 1:50-1:500

IF/ICC 1:50-1:500

## Applications

Tested Applications:

IF/ICC, IHC, WB, ELISA

Cited Applications:

IHC

Species Specificity:

human, mouse, rat

Cited Species:

human

**Note-IHC: suggested antigen retrieval with TE buffer pH 9.0; (\*) Alternatively, antigen retrieval may be performed with citrate buffer pH 6.0**

Positive Controls:

WB : mouse lung tissue, HeLa cells

IHC : human breast cancer tissue,

IF/ICC : HeLa cells,

## Background Information

### Notable Publications

Author	Pubmed ID	Journal	Application
Masataka Nomoto	34857990	J Clin Biochem Nutr	IHC
Roni Levy	12015537	Am J Obstet Gynecol	IHC

## Storage

Storage:

Store at -20°C. Stable for one year after shipment.

Storage Buffer:

PBS with 0.02% sodium azide and 50% glycerol pH 7.3.

Aliquoting is unnecessary for -20°C storage

For technical support and original validation data for this product please contact:

T: 4006900926

E: [Proteintech-CN@ptglab.com](mailto:Proteintech-CN@ptglab.com)

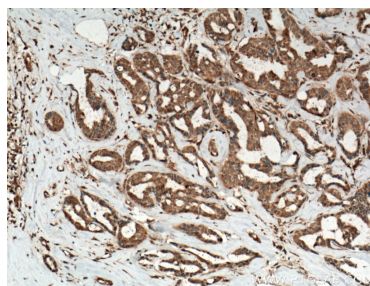
W: [ptgcn.com](http://ptgcn.com)

This product is exclusively available under Proteintech Group brand and is not available to purchase from any other manufacturer.

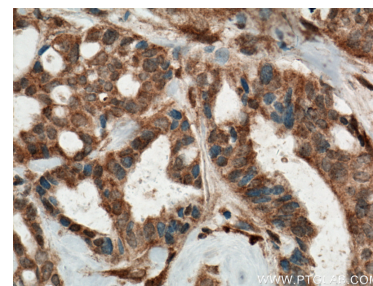
## Selected Validation Data



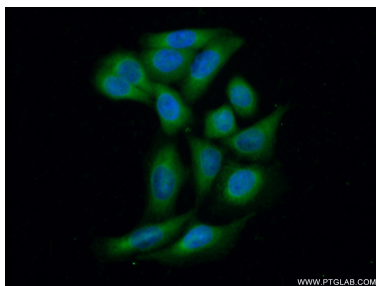
mouse lung tissue were subjected to SDS PAGE followed by western blot with 18002-1-AP (PP11 antibody) at dilution of 1:600 incubated at room temperature for 1.5 hours.



Immunohistochemical analysis of paraffin-embedded human breast cancer tissue slide using 18002-1-AP (PP11 antibody) at dilution of 1:200 (under 10x lens. Heat mediated antigen retrieval with Tris-EDTA buffer (pH 9.0).



Immunohistochemical analysis of paraffin-embedded human breast cancer tissue slide using 18002-1-AP (PP11 antibody) at dilution of 1:200 (under 40x lens. Heat mediated antigen retrieval with Tris-EDTA buffer (pH 9.0).



Immunofluorescent analysis of (-20°C Ethanol) fixed HeLa cells using 18002-1-AP (PP11 antibody) at dilution of 1:50 and Alexa Fluor 488-conjugated AffiniPure Goat Anti-Rabbit IgG(H+L).