

PPCS Polyclonal antibody

Catalog Number: 18001-1-AP

1 Publications

Basic Information

Catalog Number:

18001-1-AP

Size:

240 µg/ml

Source:

Rabbit

Isotype:

IgG

Immunogen Catalog Number:

AG12491

GenBank Accession Number:

BC106064

GeneID (NCBI):

79717

UNIPROT ID:

Q9HAB8

Full Name:

phosphopantothenoylcysteine synthetase

Calculated MW:

311 aa, 34 kDa

Observed MW:

34 kDa

Purification Method:

Antigen affinity purification

Recommended Dilutions:

WB 1:500-1:1000

IHC 1:20-1:200

Applications

Tested Applications:

IHC, WB, ELISA

Cited Applications:

IF

Species Specificity:

human, mouse, rat

Cited Species:

human

Note-IHC: suggested antigen retrieval with TE buffer pH 9.0; (*) Alternatively, antigen retrieval may be performed with citrate buffer pH 6.0

Positive Controls:

WB: HeLa cells,

IHC: human kidney tissue, human lung tissue, human ovary tissue, human placenta tissue, human spleen tissue, human testis tissue

Background Information

PPCS (Phosphopantothenate--cysteine ligase) is also named as COAB and belongs to the PPC synthetase family. It catalyzes the first step in the biosynthesis of coenzyme A from vitamin B5, where cysteine is conjugated to 4'-phosphopantothenate to form 4-phosphopantothenoylcysteine. It can be exist as a homodimer (PMID:12906824).

Notable Publications

| Author | Pubmed ID | Journal | Application |
|----------------|-----------|---------------|-------------|
| Jovana Baković | 33498827 | Int J Mol Sci | IF |

Storage

Storage:

Store at -20°C. Stable for one year after shipment.

Storage Buffer:

PBS with 0.02% sodium azide and 50% glycerol pH 7.3.

Aliquoting is unnecessary for -20°C storage

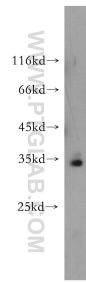
For technical support and original validation data for this product please contact:

T: 4006900926

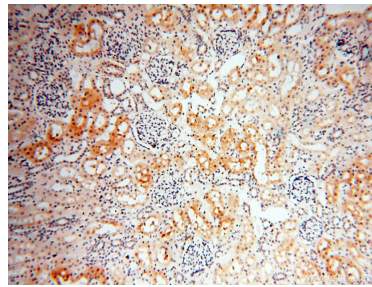
E: Proteintech-CN@ptglab.comW: ptgcn.com

This product is exclusively available under Proteintech Group brand and is not available to purchase from any other manufacturer.

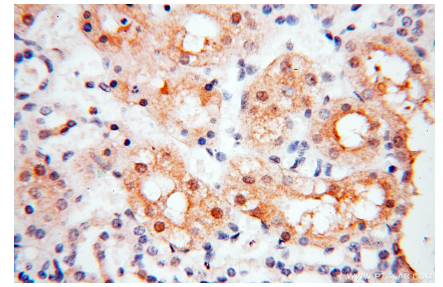
Selected Validation Data



HeLa cells were subjected to SDS PAGE followed by western blot with 18001-1-AP (PPCS antibody) at dilution of 1:500 incubated at room temperature for 1.5 hours.



Immunohistochemical analysis of paraffin-embedded human kidney using 18001-1-AP (PPCS antibody) at dilution of 1:100 (under 10x lens).



Immunohistochemical analysis of paraffin-embedded human kidney using 18001-1-AP (PPCS antibody) at dilution of 1:100 (under 40x lens).