

For Research Use Only

# INSL3 Polyclonal antibody

Catalog Number: 17997-1-AP

2 Publications



## Basic Information

<b>Catalog Number:</b> 17997-1-AP	<b>GenBank Accession Number:</b> BC071706	<b>Purification Method:</b> Antigen affinity purification
<b>Size:</b> 600 µg/ml	<b>GeneID (NCBI):</b> 3640	<b>Recommended Dilutions:</b> WB 1:500-1:1000 IHC 1:50-1:500
<b>Source:</b> Rabbit	<b>UNIPROT ID:</b> P51460	
<b>Isotype:</b> IgG	<b>Full Name:</b> insulin-like 3 (Leydig cell)	
<b>Immunogen Catalog Number:</b> AG12455	<b>Calculated MW:</b> 131 aa, 14 kDa	

## Applications

<b>Tested Applications:</b> WB, IHC, ELISA	<b>Positive Controls:</b>
<b>Cited Applications:</b> WB	<b>WB :</b> human testis tissue,
<b>Species Specificity:</b> human	<b>IHC :</b> human testis tissue,
<b>Cited Species:</b> rat	

**Note-IHC:** suggested antigen retrieval with **TE buffer pH 9.0; (\*) Alternatively, antigen retrieval may be performed with citrate buffer pH 6.0**

## Background Information

Insulin-like 3 (INSL3), a Leydig cell-specific hormone, is essential for testis descent during foetal life and bone metabolism in adults. Insl3-deficient mice exhibit bilateral undescended testes located high in the abdominal cavity. INSL3 is presumed also to conform to a heterodimeric A-B structure of approximately 6 kDa once released from the producing cells. It is possible that both the mature form of INSL3 (6.6 kDa) and the pro-form(s) of INSL3 (12-14 kDa) are secreted from mammalian Leydig cells (PMID: 19329805).

## Notable Publications

Author	Pubmed ID	Journal	Application
Xiang Zhou	36308879	Ecotoxicol Environ Saf	WB
Nan Yang	39700678	Exp Mol Pathol	WB

## Storage

**Storage:**  
Store at -20°C. Stable for one year after shipment.  
**Storage Buffer:**  
PBS with 0.02% sodium azide and 50% glycerol pH 7.3.  
Aliquoting is unnecessary for -20°C storage

For technical support and original validation data for this product please contact:

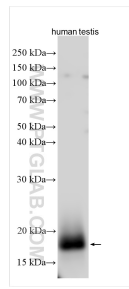
T: 4006900926

E: [Proteintech-CN@ptglab.com](mailto:Proteintech-CN@ptglab.com)

W: [ptgcn.com](http://ptgcn.com)

This product is exclusively available under Proteintech Group brand and is not available to purchase from any other manufacturer.

## Selected Validation Data



human testis tissue were subjected to SDS PAGE followed by western blot with 17997-1-AP (INSL3 antibody) at dilution of 1:600 incubated at room temperature for 1.5 hours.