

For Research Use Only

BPHL Polyclonal antibody

Catalog Number: 17974-1-AP



Basic Information

Catalog Number:

17974-1-AP

Size:

500 ug/ml

Source:

Rabbit

Isotype:

IgG

Immunogen Catalog Number:

AG12085

GenBank Accession Number:

BC037778

GeneID (NCBI):

670

UNIPROT ID:

Q86WA6

Full Name:

biphenyl hydrolase-like (serine hydrolase)

Calculated MW:

22 kDa, 32 kDa

Observed MW:

27 kDa

Purification Method:

Antigen affinity purification

Recommended Dilutions:

WB 1:500-1:2000

IHC 1:20-1:200

Applications

Tested Applications:

WB, IHC, ELISA

Species Specificity:

human, mouse, rat

Note-IHC: suggested antigen retrieval with TE buffer pH 9.0; (*) Alternatively, antigen retrieval may be performed with citrate buffer pH 6.0

Positive Controls:

WB : human kidney tissue, human liver tissue, MCF-7 cells, mouse kidney tissue

IHC : human kidney tissue, human heart tissue, human lung tissue, human ovary tissue, human placenta tissue

Background Information

Storage

Storage:

Store at -20°C. Stable for one year after shipment.

Storage Buffer:

PBS with 0.02% sodium azide and 50% glycerol pH 7.3.

Aliquoting is unnecessary for -20°C storage

For technical support and original validation data for this product please contact:

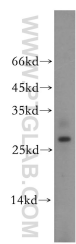
T: 4006900926

E: Proteintech-CN@ptglab.com

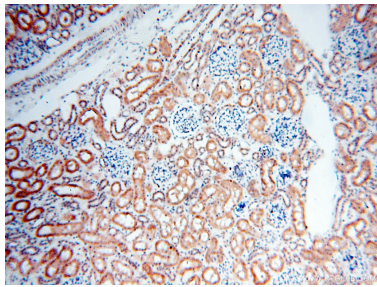
W: ptgcn.com

This product is exclusively available under Proteintech Group brand and is not available to purchase from any other manufacturer.

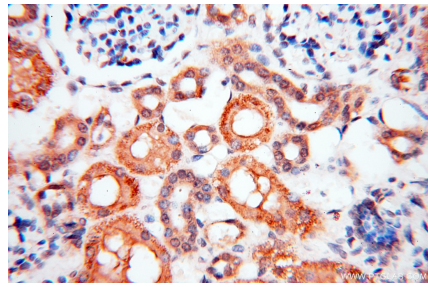
Selected Validation Data



human kidney tissue were subjected to SDS PAGE followed by western blot with 17974-1-AP (BPHL antibody) at dilution of 1:500 incubated at room temperature for 1.5 hours.



Immunohistochemical analysis of paraffin-embedded human kidney using 17974-1-AP (BPHL antibody) at dilution of 1:100 (under 10x lens).



Immunohistochemical analysis of paraffin-embedded human kidney using 17974-1-AP (BPHL antibody) at dilution of 1:100 (under 40x lens).