

## GLRA1 Polyclonal antibody

Catalog Number: 17951-1-AP

5 Publications

## Basic Information

## Catalog Number:

17951-1-AP

## Size:

750 µg/ml

## Source:

Rabbit

## Isotype:

IgG

## Immunogen Catalog Number:

AG12431

## GenBank Accession Number:

BC074980

## GeneID (NCBI):

2741

## UNIPROT ID:

P23415

## Full Name:

glycine receptor, alpha 1

## Calculated MW:

449 aa, 52 kDa

## Observed MW:

48 kDa

## Purification Method:

Antigen affinity purification

## Recommended Dilutions:

WB 1:500-1:3000

## Applications

## Tested Applications:

WB, ELISA

## Cited Applications:

WB, IF, CoIP

## Species Specificity:

human, mouse, rat

## Cited Species:

human, mouse

## Positive Controls:

WB : mouse brain tissue, mouse cerebellum tissue, SH-SY5Y cells

## Background Information

Glycine is an inhibitory neurotransmitter in the central nervous system. The glycine receptor (GlyR) is a member of the nicotinic acetylcholine receptor of ligand-gated ion channels. This receptor has important roles in a variety of physiological processes, especially in mediating inhibitory neurotransmission in the spinal cord and brain stem. GlyR is a pentameric receptor comprised of alpha and beta subunits. Four alpha-subunits (GLRA1, GLRA2, GLRA3, GLRA4) and one beta-subunit (GLRB) of GlyR have been identified. (PMID: 11409700; 15383648)

## Notable Publications

Author	Pubmed ID	Journal	Application
Ghada I Aboheimed	35526563	J Biol Chem	WB, IF
Lin Yao	33727056	Eur J Pharmacol	WB
Niannian Huang	31321459	Psychopharmacology (Berl)	WB

## Storage

## Storage:

Store at -20°C. Stable for one year after shipment.

## Storage Buffer:

PBS with 0.02% sodium azide and 50% glycerol pH 7.3.

Aliquoting is unnecessary for -20°C storage

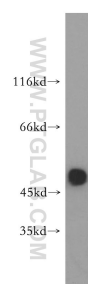
For technical support and original validation data for this product please contact:

T: 4006900926

E: [Proteintech-CN@ptglab.com](mailto:Proteintech-CN@ptglab.com)W: [ptgcn.com](http://ptgcn.com)

This product is exclusively available under Proteintech Group brand and is not available to purchase from any other manufacturer.

## Selected Validation Data



mouse brain tissue were subjected to SDS PAGE followed by western blot with 17951-1-AP (GLRA1 antibody) at dilution of 1:500 incubated at room temperature for 1.5 hours.