

For Research Use Only

# RPE65 Polyclonal antibody

Catalog Number: 17939-1-AP

Featured Product

14 Publications



## Basic Information

Catalog Number:

17939-1-AP

Concentration:

700 ug/ml

Source:

Rabbit

Isotype:

IgG

Immunogen Catalog Number:

AG12356

GenBank Accession Number:

BC075036

GeneID (NCBI):

6121

UNIPROT ID:

Q16518

Full Name:

retinal pigment epithelium-specific protein 65kDa

Calculated MW:

61 kDa

Observed MW:

65 kDa, 61 kDa

Purification Method:

Antigen affinity purification

Recommended Dilutions:

WB 1:500-1:3000

IHC 1:50-1:500

IF-P 1:50-1:500

IF-Fro 1:50-1:500

## Applications

Tested Applications:

WB, IHC, IF-P, IF-Fro, ELISA

Cited Applications:

WB, IHC, IF

Species Specificity:

human, mouse, rat

Cited Species:

human, mouse, rat, zebrafish

**Note-IHC: suggested antigen retrieval with TE buffer pH 9.0; (\*) Alternatively, antigen retrieval may be performed with citrate buffer pH 6.0**

Positive Controls:

WB : Y79 cells, HeLa cells, PC-3 cells

IHC : mouse eye tissue,

IF-P : mouse eye tissue,

IF-Fro : mouse eye tissue,

## Background Information

RPE65(Retinal pigment epithelium-specific 65 kDa protein) is also named as retinoid isomerohydrolase with the calculated molecular weight of 61 kDa and belongs to the carotenoid oxygenase family. It is a microsomal protein with isomerase activity in the retinoid visual cycle that playing a role in the isomerisation of all-trans (vitamin A) to 11-cis retinal, the chromophore of the visual pigments. It also might be involved in retinoid uptake of keratinocytes.

## Notable Publications

Author	Pubmed ID	Journal	Application
Jianing Gu	31075513	Acta Biomater	WB
Caiying Liu	35325805	Redox Biol	WB
Lars Tebbe	35344225	FASEB J	IF

## Storage

Storage:

Store at -20°C. Stable for one year after shipment.

Storage Buffer:

PBS with 0.02% sodium azide and 50% glycerol, pH7.3

Aliquoting is unnecessary for -20°C storage

For technical support and original validation data for this product please contact:

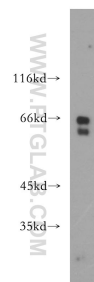
T: 4006900926

E: [Proteintech-CN@ptglab.com](mailto:Proteintech-CN@ptglab.com)

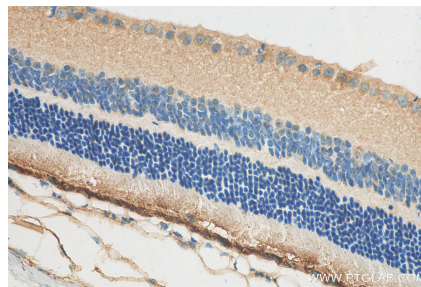
W: [ptgcn.com](http://ptgcn.com)

**This product is exclusively available under Proteintech Group brand and is not available to purchase from any other manufacturer.**

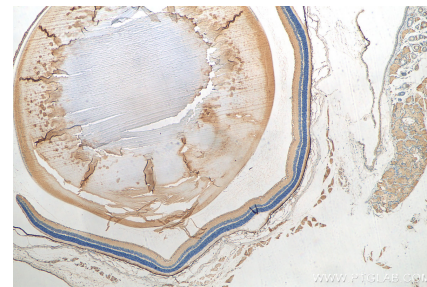
## Selected Validation Data



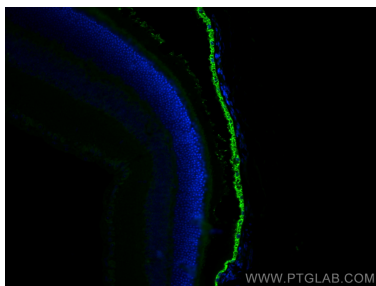
Y79 cells were subjected to SDS PAGE followed by western blot with 17939-1-AP (RPE65 antibody) at dilution of 1:600 incubated at room temperature for 1.5 hours.



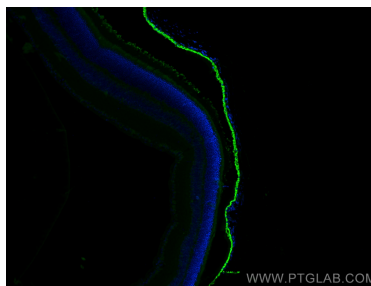
Immunohistochemical analysis of paraffin-embedded mouse eye tissue slide using 17939-1-AP (RPE65 antibody) at dilution of 1:200 (under 40x lens). Heat mediated antigen retrieval with Tris-EDTA buffer (pH 9.0).



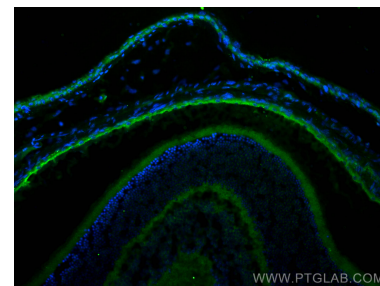
Immunohistochemical analysis of paraffin-embedded mouse eye tissue slide using 17939-1-AP (RPE65 antibody) at dilution of 1:200 (under 4x lens). Heat mediated antigen retrieval with Tris-EDTA buffer (pH 9.0).



Immunofluorescent analysis of (4% PFA) fixed mouse eye tissue using RPE65 antibody (17939-1-AP) at dilution of 1:200 and CoraLite®488-Conjugated AffiniPure Goat Anti-Rabbit IgG(H+L).



Immunofluorescent analysis of (4% PFA) fixed mouse eye tissue using RPE65 antibody (17939-1-AP) at dilution of 1:200 and CoraLite®488-Conjugated AffiniPure Goat Anti-Rabbit IgG(H+L).



Immunofluorescent analysis of (4% PFA) fixed frozen OCT-embedded mouse eye tissue using RPE65 antibody (17939-1-AP) at dilution of 1:200 and Multi-rAb CoraLite® Plus 488-Goat Anti-Rabbit Recombinant Secondary Antibody (H+L) (RGAR002).