

# SRY Polyclonal antibody

Catalog Number: 17930-1-AP

## Basic Information

**Catalog Number:**

17930-1-AP

**Size:**

340 µg/ml

**Source:**

Rabbit

**Isotype:**

IgG

**Immunogen Catalog Number:**

AG12360

**GenBank Accession Number:**

BC074924

**GeneID (NCBI):**

6736

**UNIPROT ID:**

Q05066

**Full Name:**

sex determining region Y

**Calculated MW:**

204 aa, 24 kDa

**Observed MW:**

30 kDa

**Purification Method:**

Antigen affinity purification

**Recommended Dilutions:**

WB 1:500-1:1000

IHC 1:50-1:500

## Applications

**Tested Applications:**

IHC, WB, ELISA

**Species Specificity:**

human, mouse

**Note-IHC: suggested antigen retrieval with TE buffer pH 9.0; (\*) Alternatively, antigen retrieval may be performed with citrate buffer pH 6.0**

**Positive Controls:**

WB : human testis tissue,

IHC : mouse testis tissue, human testis tissue, human spleen tissue, human kidney tissue

## Background Information

SRY (sex-determining region Y protein) is a transcriptional activator required for male sex determination in mammals. This protein, also referred to as testis-determining factor (TDF), is an HMG box protein that initiates the formation of testis from undifferentiated gonad. The DNA-binding activity of SRY is required for normal testis formation. This DNA-binding activity is thought to be regulated by PKA, which phosphorylates SRY in vivo. Mutations in SRY have been associated with 46,XY gonadal dysgenesis, in which the gonads fail to develop in XY phenotypic females.

## Storage

**Storage:**

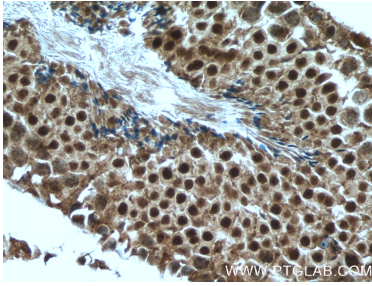
Store at -20°C. Stable for one year after shipment.

**Storage Buffer:**

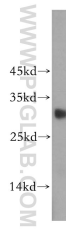
PBS with 0.02% sodium azide and 50% glycerol pH 7.3.

Aliquoting is unnecessary for -20°C storage

## Selected Validation Data



Immunohistochemical analysis of paraffin-embedded mouse testis tissue slide using 17930-1-AP (SRY antibody) at dilution of 1:200 (under 40x lens). Heat mediated antigen retrieval with Tris-EDTA buffer (pH 9.0).



human testis tissue were subjected to SDS PAGE followed by western blot with 17930-1-AP (SRY antibody) at dilution of 1:500 incubated at room temperature for 1.5 hours.