

For Research Use Only

ETFB Polyclonal antibody

Catalog Number: 17925-1-AP

7 Publications



Basic Information

Catalog Number:

17925-1-AP

Concentration:

600 ug/ml

Source:

Rabbit

Isotype:

IgG

Immunogen Catalog Number:

AG12344

GenBank Accession Number:

BC093961

GeneID (NCBI):

2109

UNIPROT ID:

P38117

Full Name:

electron-transfer-flavoprotein, beta polypeptide

Calculated MW:

255 aa, 28 kDa

Observed MW:

28 kDa

Purification Method:

Antigen affinity purification

Recommended Dilutions:

WB 1:500-1:2000

IP 0.5-4.0 ug for 1.0-3.0 mg of total protein lysate

IHC 1:200-1:800

IF/ICC 1:50-1:500

Applications

Tested Applications:

WB, IHC, IF/ICC, IP, ELISA

Cited Applications:

WB, IF

Species Specificity:

human, mouse, rat

Cited Species:

human, mouse

Positive Controls:

WB : mouse skeletal muscle tissue, human heart tissue, mouse brain tissue, rat brain tissue

IP : mouse brain tissue,

IHC : human stomach cancer tissue,

IF/ICC : HeLa cells,

Note-IHC: suggested antigen retrieval with TE buffer pH 9.0; (*) Alternatively, antigen retrieval may be performed with citrate buffer pH 6.0

Background Information

Electron transfer flavoprotein (ETF) exists in the mitochondrial matrix as a heterodimer of 30 kDa alpha subunits (ETFA) and 28 kDa beta subunits (ETFB) and contains 1 flavin adenine dinucleotide (FAD) and 1 adenosine 5-prime monophosphate (AMP) per heterodimer. It serves as a specific electron acceptor for several dehydrogenases, including five acyl-CoA dehydrogenases, glutaryl-CoA and sarcosine dehydrogenase. ETFB has 2 isoforms produced by alternative splicing. Defects in ETFB are the cause of glutaric aciduria type 2B (GA2B).

Notable Publications

Author	Pubmed ID	Journal	Application
Sara García-Gómez	24207056	Mol Cell	WB
Debora Lia	29848661	J Cell Sci	WB
Olga Zurita Rendón	27215383	Mol Cell Biol	WB

Storage

Storage:

Store at -20°C. Stable for one year after shipment.

Storage Buffer:

PBS with 0.02% sodium azide and 50% glycerol, pH7.3

Aliquoting is unnecessary for -20°C storage

For technical support and original validation data for this product please contact:

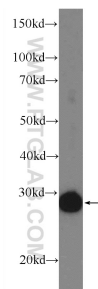
T: 4006900926

E: Proteintech-CN@ptglab.com

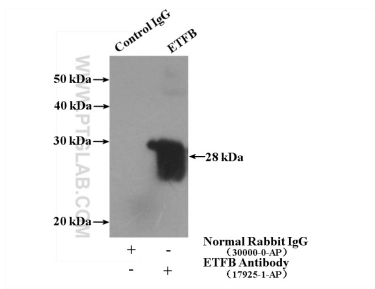
W: ptgcn.com

This product is exclusively available under Proteintech Group brand and is not available to purchase from any other manufacturer.

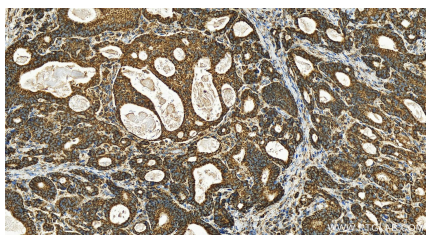
Selected Validation Data



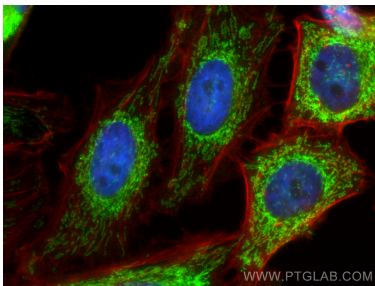
mouse skeletal muscle tissue were subjected to SDS PAGE followed by western blot with 17925-1-AP (ETFB Antibody) at dilution of 1:1000 incubated at room temperature for 1.5 hours.



IP result of anti-ETFB (IP:17925-1-AP, 3ug; Detection:17925-1-AP 1:1000) with mouse brain tissue lysate 4000ug.



Immunohistochemical analysis of paraffin-embedded human stomach cancer tissue slide using 17925-1-AP (ETFB antibody) at dilution of 1:400 (under 20x lens). Heat mediated antigen retrieval with Tris-EDTA buffer (pH 9.0).



Immunofluorescent analysis of (4% PFA) fixed HeLa cells using ETFB antibody (17925-1-AP) at dilution of 1:200 and CoraLite®488-Conjugated Goat Anti-Rabbit IgG(H+L) (SA00013-2), CL594-Phalloidin (red).