

For Research Use Only

# SEC31A Polyclonal antibody

Catalog Number: 17913-1-AP

Featured Product

10 Publications



## Basic Information

**Catalog Number:**

17913-1-AP

**Size:**

400 µg/ml

**Source:**

Rabbit

**Isotype:**

IgG

**Immunogen Catalog Number:**

AG12314

**GenBank Accession Number:**

BC084583

**GeneID (NCBI):**

22872

**UNIPROT ID:**

O94979

**Full Name:**

SEC31 homolog A (*S. cerevisiae*)

**Calculated MW:**

1220 aa, 133 kDa

**Observed MW:**

118-134 kDa

**Purification Method:**

Antigen affinity purification

**Recommended Dilutions:**

WB 1:1000-1:8000

IP 0.5-4.0 µg for 1.0-3.0 mg of total protein lysate

IF 1:200-1:800

## Applications

**Tested Applications:**

IF/ICC, IP, WB, ELISA

**Cited Applications:**

WB, IP, IF

**Species Specificity:**

human

**Cited Species:**

human, rat, mouse

**Positive Controls:**

WB : HeLa cells, HepG2 cells, Jurkat cells

IP : HeLa cells,

IF : HeLa cells,

## Background Information

COPII-coated vesicles mediate anterograde transport from the ER to the Golgi apparatus. COPII is composed of three parts: two coat protein complexes (Sec23/24 complex and Sec13/31 complex) and one small GTP-binding protein, Sar1 (PMID: 9568718). Sec31 subunit of the coat complex has been shown to be essential for vesicle formation and ER-Golgi transport (PMID: 10788476). Two mammalian homologues of yeast sec31p, Sec31A and Sec31B, share about 40% amino acid identity. Sec31A transcripts are ubiquitously and abundantly expressed.

## Notable Publications

Author	Pubmed ID	Journal	Application
Mengyue You	36252341	Redox Biol	WB
Lingyun Long	34795452	Nature	IP, WB
Tatiana Leiva-Rodríguez	29799519	Cell Death Dis	WB

## Storage

**Storage:**

Store at -20°C. Stable for one year after shipment.

**Storage Buffer:**

PBS with 0.02% sodium azide and 50% glycerol pH 7.3.

Aliquoting is unnecessary for -20°C storage

For technical support and original validation data for this product please contact:

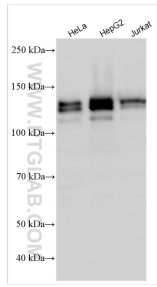
T: 4006900926

E: Proteintech-CN@ptglab.com

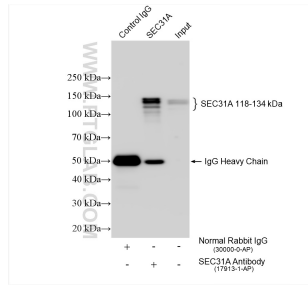
W: ptgcn.com

This product is exclusively available under Proteintech Group brand and is not available to purchase from any other manufacturer.

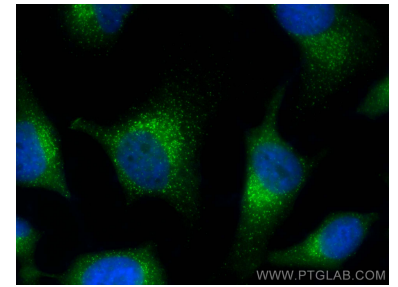
## Selected Validation Data



Various lysates were subjected to SDS PAGE followed by western blot with 17913-1-AP (SEC31A antibody) at dilution of 1:4000 incubated at room temperature for 1.5 hours.



IP result of anti-SEC31A (IP:17913-1-AP, 4ug; Detection:17913-1-AP 1:5000) with HeLa cells lysate 1320 ug.



Immunofluorescent analysis of (-20°C Methanol) fixed HeLa cells using SEC31A antibody (17913-1-AP) at dilution of 1:400 and CoraLite@488-Conjugated AffiniPure Goat Anti-Rabbit IgG(H+L).