

SLC6A18 Polyclonal antibody

Catalog Number: 17876-1-AP

Basic Information

Catalog Number:

17876-1-AP

Size:

300 µg/ml

Source:

Rabbit

Isotype:

IgG

Immunogen Catalog Number:

AG11685

GenBank Accession Number:

BC056757

GeneID (NCBI):

348932

UNIPROT ID:

Q96N87

Full Name:

solute carrier family 6, member 18

Calculated MW:

628 aa, 71 kDa

Observed MW:

~70 kDa

Purification Method:

Antigen affinity purification

Recommended Dilutions:

WB 1:500-1:2000

Applications

Tested Applications:

WB, ELISA

Species Specificity:

human, mouse

Positive Controls:

WB : HepG2 cells, RAW 264.7 cells, mouse brain tissue, mouse kidney tissue

Background Information

SLC6A18, also known as XTRP2 and BOAT3, belongs to the SLC6 family of proteins. SLC6A18 acts as specific transporters for neurotransmitters, amino acids and osmolytes such as betaine, taurine and creatine. SLC6A18 is highly expressed at the luminal membrane of kidney proximal tubules and displays 50% identity with SLC6A19 (BOAT1), which is the main neutral amino acid transporter in both kidney and small intestine (PMID: 19478081, PMID: 21420947).

Storage

Storage:

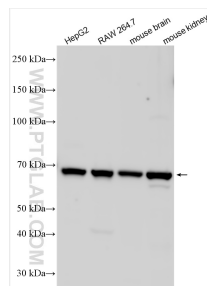
Store at -20°C. Stable for one year after shipment.

Storage Buffer:

PBS with 0.02% sodium azide and 50% glycerol pH 7.3.

Aliquoting is unnecessary for -20°C storage

Selected Validation Data



Various lysates were subjected to SDS PAGE followed by western blot with 17876-1-AP (SLC6A18 antibody) at dilution of 1:1000 incubated at room temperature for 1.5 hours.