

GCS1 Polyclonal antibody

Catalog Number: 17859-1-AP

Featured Product

8 Publications

Basic Information

Catalog Number:

17859-1-AP

Size:

350 µg/ml

Source:

Rabbit

Isotype:

IgG

Immunogen Catalog Number:

AG12321

GenBank Accession Number:

BC028337

GeneID (NCBI):

7841

UNIPROT ID:

Q13724

Full Name:

mannosyl-oligosaccharide
glucosidase

Calculated MW:

837 aa, 92 kDa

Observed MW:

80-92 kDa

Purification Method:

Antigen affinity purification

Recommended Dilutions:

WB 1:500-1:2000

IHC 1:20-1:200

Applications

Tested Applications:

IHC, WB, ELISA

Cited Applications:

WB, IF, IHC, CoIP

Species Specificity:

human, mouse

Cited Species:

human, rat

**Note-IHC: suggested antigen retrieval with
TE buffer pH 9.0; (*) Alternatively, antigen
retrieval may be performed with citrate
buffer pH 6.0**

Positive Controls:

WB : COLO 320 cells,

IHC : human small intestine tissue, human liver tissue

Background Information

MOGS (Mannosyl-oligosaccharide glucosidase), also known as GCS1, is the first enzyme in the N-linked oligosaccharide processing pathway. The enzyme cleaves the distal alpha-1,2-linked glucose residue from the Glc(3)-Man(9)-GlcNAc(2) oligosaccharide precursor (PMID: 38187061). The resulting Glc(2)-Man(9)-GlcNAc(2) intermediate is then further modified by glucosidase II and several ER- and Golgi-resident mannosidases and glycosyltransferases, finally yielding a complex array of glycan structures (PMID: 3896128). MOGS has two isoforms, and it is located in the lumen of the endoplasmic reticulum.

Notable Publications

Author	Pubmed ID	Journal	Application
Yong Huang	32938225	Am J Physiol Cell Physiol	WB
Jianyu Ma	31635221	Int J Mol Sci	WB
Emily J Sherman	35231079	PLoS Pathog	WB

Storage

Storage:

Store at -20°C. Stable for one year after shipment.

Storage Buffer:

PBS with 0.02% sodium azide and 50% glycerol pH 7.3.

Aliquoting is unnecessary for -20°C storage

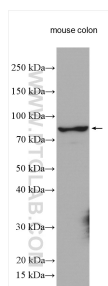
For technical support and original validation data for this product please contact:

T: 4006900926

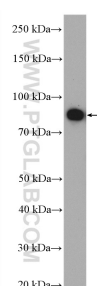
E: Proteintech-CN@ptglab.comW: ptgcn.com

**This product is exclusively available under Proteintech
Group brand and is not available to purchase from any
other manufacturer.**

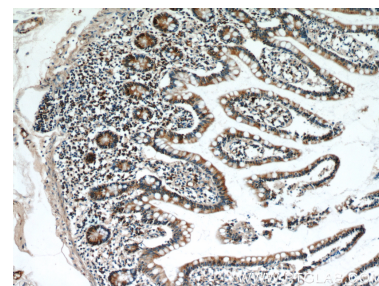
Selected Validation Data



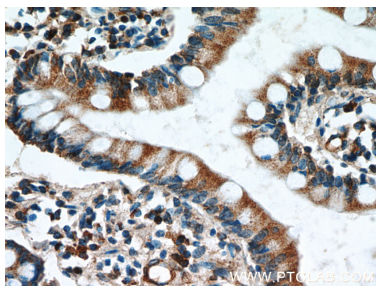
mouse colon tissue were subjected to SDS PAGE followed by western blot with 17859-1-AP (GCS1 antibody) at dilution of 1:1000 incubated at room temperature for 1.5 hours.



COLO 320 cells were subjected to SDS PAGE followed by western blot with 17859-1-AP (GCS1 antibody) at dilution of 1:1000 incubated at room temperature for 1.5 hours.



Immunohistochemical analysis of paraffin-embedded human small intestine using 17859-1-AP (GCS1 antibody) at dilution of 1:100 (under 10x lens).



Immunohistochemical analysis of paraffin-embedded human small intestine using 17859-1-AP (GCS1 antibody) at dilution of 1:100 (under 40x lens).