

For Research Use Only

SLC35E2B Polyclonal antibody

Catalog Number: 17829-1-AP



Basic Information

Catalog Number:

17829-1-AP

Size:

700 µg/ml

Source:

Rabbit

Isotype:

IgG

Immunogen Catalog Number:

AG12211

GenBank Accession Number:

BC092507

GeneID (NCBI):

728661

UNIPROT ID:

P0CK96

Full Name:

similar to solute carrier family 35, member E2

Calculated MW:

236 aa, 43 kDa

Observed MW:

44 kDa

Purification Method:

Antigen affinity purification

Recommended Dilutions:

WB 1:500-1:1000

Applications

Tested Applications:

WB, ELISA

Species Specificity:

human, mouse

Positive Controls:

WB : Jurkat cells, mouse testis tissue

Background Information

SLC35E2B, also known as SLC35E2, encodes solute carrier family 35 member E2B, functioning as a putative transporter. SLC35E2B is expressed in the heart, retina, skin, testis, and kidney (PMID:33711669).

Storage

Storage:

Store at -20°C. Stable for one year after shipment.

Storage Buffer:

PBS with 0.02% sodium azide and 50% glycerol pH 7.3.

Aliquoting is unnecessary for -20°C storage

For technical support and original validation data for this product please contact:

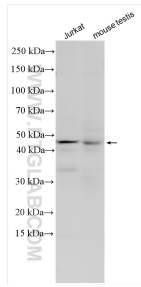
T: 4006900926

E: Proteintech-CN@ptglab.com

W: ptgcn.com

This product is exclusively available under Proteintech Group brand and is not available to purchase from any other manufacturer.

Selected Validation Data



Various lysates were subjected to SDS PAGE followed by western blot with 17829-1-AP (SLC35E2B antibody) at dilution of 1:800 incubated at room temperature for 1.5 hours.