

For Research Use Only

RAB1B Polyclonal antibody, PBS Only

Catalog Number: 17824-1-PBS

Featured Product



Basic Information

Catalog Number:

17824-1-PBS

Source:

Rabbit

Isotype:

IgG

Immunogen Catalog Number:

AG12197

GenBank Accession Number:

BC071169

GeneID (NCBI):

81876

UNIPROT ID:

Q9H0U4

Full Name:

RAB1B, member RAS oncogene family

Calculated MW:

201 aa, 22 kDa

Observed MW:

22-25 kDa

Purification Method:

Antigen affinity purification

Applications

Tested Applications:

WB, IHC, IF/ICC, ELISA

Species Specificity:

human, mouse

Background Information

Ras-related protein Rab-1B (RAB1B) belongs to the small GTPase superfamily and Rab family. Rab1b, a GTPase regulating secretory transport, was recently associated with targeting proteins to LDs in a Drosophila RNAi screen. Rab1b recruits lipid-synthesizing enzymes, facilitating Lipid droplets (LDs) growth. The small GTPase Rab1b interacts with diacylglycerol acyltransferase 2 to facilitate its targeting to the surface of lipid droplets (PMID: 38809969). Rab1b, an extensively studied and established master regulator of ER-to-Golgi transport. The mechanism of Rab1b's function is to promote ER to LD surface targeting of those triglyceride-synthesizing enzymes that can associate with the unique lipid monolayer comprising the LD surface (PMID: 38809969). Rab1b is a regulatory protein involved in both COPI and COPII transport (PMID: 17429068). RAB1B may be cross-reactions with both RAB1A.

Storage

Storage:

Store at -80°C.

The product is shipped with ice packs. Upon receipt, store it immediately at -80°C

Storage Buffer:

PBS only, pH7.3

For technical support and original validation data for this product please contact:

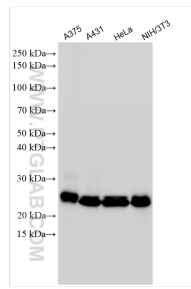
T: 4006900926

E: Proteintech-CN@ptglab.com

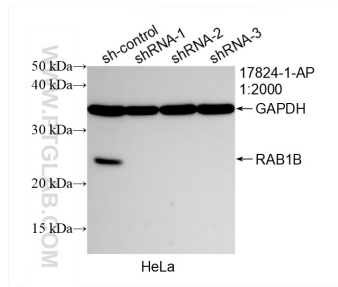
W: ptgcn.com

This product is exclusively available under Proteintech Group brand and is not available to purchase from any other manufacturer.

Selected Validation Data



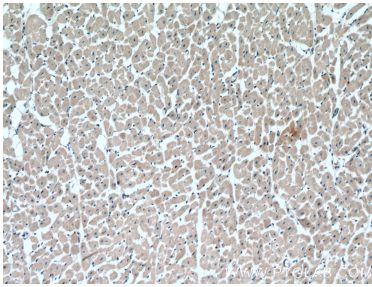
Various lysates were subjected to SDS PAGE followed by western blot with 17824-1-AP (RAB1B antibody) at dilution of 1:3000 incubated at room temperature for 1.5 hours. This data was developed using the same antibody clone with 17824-1-PBS in a different storage buffer formulation.



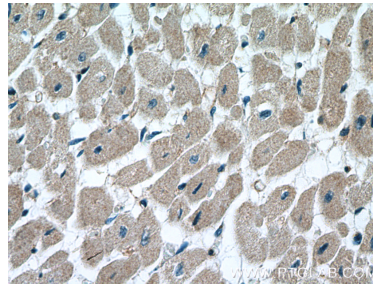
WB result of RAB1B antibody (17824-1-AP; 1:2000; incubated at room temperature for 1.5 hours) with sh-Control and sh-RAB1B transfected HeLa cells. This data was developed using the same antibody clone with 17824-1-PBS in a different storage buffer formulation.



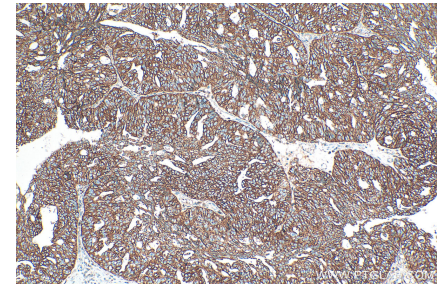
HeLa cells were subjected to SDS PAGE followed by western blot with 17824-1-AP (RAB1B antibody) at dilution of 1:600 incubated at room temperature for 1.5 hours.



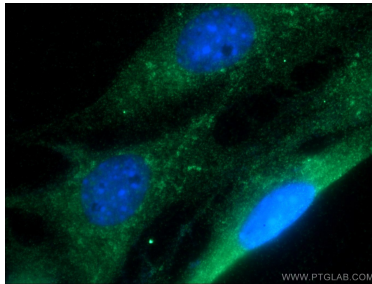
Immunohistochemical analysis of paraffin-embedded human heart tissue slide using 17824-1-AP (RAB1B Antibody) at dilution of 1:200 (under 10x lens). This data was developed using the same antibody clone with 17824-1-PBS in a different storage buffer formulation.



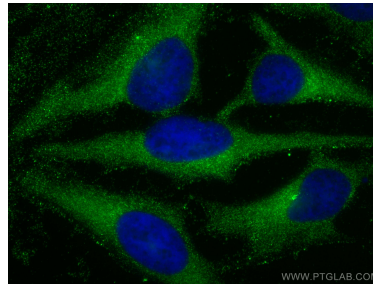
Immunohistochemical analysis of paraffin-embedded human heart tissue slide using 17824-1-AP (RAB1B Antibody) at dilution of 1:200 (under 40x lens). This data was developed using the same antibody clone with 17824-1-PBS in a different storage buffer formulation.



Immunohistochemical analysis of paraffin-embedded human ovary cancer tissue slide using 17824-1-AP (RAB1B antibody) at dilution of 1:400 (under 10x lens). Heat mediated antigen retrieval with Tris-EDTA buffer (pH 9.0). This data was developed using the same antibody clone with 17824-1-PBS in a different storage buffer formulation.



Immunofluorescent analysis of NIH/3T3 cells using 17824-1-AP (RAB1B antibody) at dilution of 1:50 and Alexa Fluor 488-conjugated AffiniPure Goat Anti-Rabbit IgG(H+L). This data was developed using the same antibody clone with 17824-1-PBS in a different storage buffer formulation.



Immunofluorescent analysis of (-20°C Methanol) fixed HeLa cells using RAB1B antibody (17824-1-AP) at dilution of 1:400 and CoraLite®488-Conjugated AffiniPure Goat Anti-Rabbit IgG(H+L). This data was developed using the same antibody clone with 17824-1-PBS in a different storage buffer formulation.