

For Research Use Only

LGALS13 Polyclonal antibody

Catalog Number: 17823-1-AP



Basic Information

Catalog Number:

17823-1-AP

Concentration:

450 ug/ml

Source:

Rabbit

Isotype:

IgG

Immunogen Catalog Number:

AG12192

GenBank Accession Number:

BC066304

GeneID (NCBI):

29124

UNIPROT ID:

Q9UHV8

Full Name:

lectin, galactoside-binding, soluble,
13

Calculated MW:

139 aa, 16 kDa

Observed MW:

16 kDa

Purification Method:

Antigen affinity purification

Recommended Dilutions:

WB 1:500-1:1000

Applications

Tested Applications:

WB, ELISA

Species Specificity:

human

Positive Controls:

WB : human placenta tissue,

Background Information

Galectins are glycan-binding proteins that regulate innate and adaptive immune responses, and some confer maternal-fetal immune tolerance in eutherian mammals. Three of the five human cluster galectins are solely expressed in the placenta, where they may confer additional immunoregulatory functions to enable deep placentation (PMID: 25191322). One of these is galactoside-binding soluble lectin 13 (LGALS13, also known as Galectin-13 and PP13), which has a high affinity for the sugar residues of glycoproteins. PP13 is implicated in placentation and is involved in inflammation and immune defense required for trophoblast invasion during uterine artery remodeling in early pregnancy (PMID: 19497882; 10527825; 21596368; 26018511).

Storage

Storage:

Store at -20°C. Stable for one year after shipment.

Storage Buffer:

PBS with 0.02% sodium azide and 50% glycerol pH 7.3.

Aliquoting is unnecessary for -20°C storage

For technical support and original validation data for this product please contact:

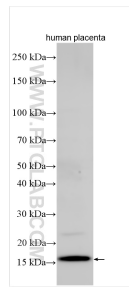
T: 4006900926

E: Proteintech-CN@ptglab.com

W: ptgcn.com

This product is exclusively available under Proteintech Group brand and is not available to purchase from any other manufacturer.

Selected Validation Data



Various lysates were subjected to SDS PAGE followed by western blot with 17823-1-AP (LGALS13 antibody) at dilution of 1:500 incubated at room temperature for 1.5 hours.