

For Research Use Only

# RABL2A Polyclonal antibody

Catalog Number: 17816-1-AP

Featured Product

2 Publications



## Basic Information

**Catalog Number:**

17816-1-AP

**Size:**

700 µg/ml

**Source:**

Rabbit

**Isotype:**

IgG

**Immunogen Catalog Number:**

AG12135

**GenBank Accession Number:**

BC111008

**GeneID (NCBI):**

11159

**UNIPROT ID:**

Q9UBK7

**Full Name:**

RAB, member of RAS oncogene family-like 2A

**Calculated MW:**

165aa, 18 kDa; 228aa, 26 kDa

**Observed MW:**

26 kDa

**Purification Method:**

Antigen affinity purification

**Recommended Dilutions:**

WB 1:500-1:2000

IHC 1:50-1:500

## Applications

**Tested Applications:**

IHC, WB, ELISA

**Cited Applications:**

IP, RIP, WB

**Species Specificity:**

human, mouse

**Cited Species:**

human

**Note-IHC: suggested antigen retrieval with TE buffer pH 9.0; (\*) Alternatively, antigen retrieval may be performed with citrate buffer pH 6.0**

**Positive Controls:**

WB: mouse pancreas tissue, human brain tissue, mouse brain tissue

IHC: mouse ovary tissue, human ovary tumor tissue

## Background Information

### Notable Publications

Author	Pubmed ID	Journal	Application
Mingxiu Zhou	34767735	DNA Cell Biol	WB,IP
Samuel Pushparaj	37528621	RNA Biol	WB,RIP

## Storage

**Storage:**

Store at -20°C. Stable for one year after shipment.

**Storage Buffer:**

PBS with 0.02% sodium azide and 50% glycerol pH 7.3.

Aliquoting is unnecessary for -20°C storage

For technical support and original validation data for this product please contact:

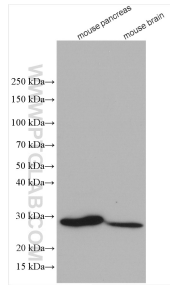
T: 4006900926

E: Proteintech-CN@ptglab.com

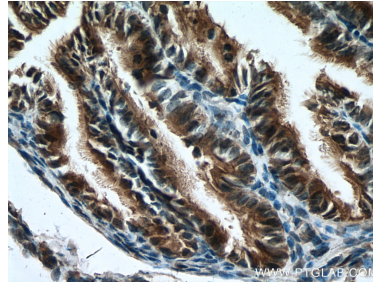
W: ptgcn.com

**This product is exclusively available under Proteintech Group brand and is not available to purchase from any other manufacturer.**

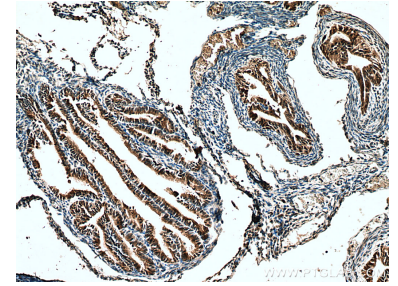
## Selected Validation Data



Various lysates were subjected to SDS PAGE followed by western blot with 17816-1-AP (RABL2A antibody) at dilution of 1:1000 incubated at room temperature for 1.5 hours.



Immunohistochemical analysis of paraffin-embedded mouse ovary tissue slide using 17816-1-AP (RABL2A antibody) at dilution of 1:200 (under 40x lens). Heat mediated antigen retrieval with Tris-EDTA buffer (pH 9.0).



Immunohistochemical analysis of paraffin-embedded mouse ovary tissue slide using 17816-1-AP (RABL2A antibody) at dilution of 1:200 (under 10x lens). Heat mediated antigen retrieval with Tris-EDTA buffer (pH 9.0).