

For Research Use Only

SERP1 Polyclonal antibody

Catalog Number: 17807-1-AP **3 Publications**



Basic Information

Catalog Number:

17807-1-AP

Size:

193 µg/ml

Source:

Rabbit

Isotype:

IgG

Immunogen Catalog Number:

AG12087

GenBank Accession Number:

BC108314

GeneID (NCBI):

27230

UNIPROT ID:

Q9Y6X1

Full Name:

stress-associated endoplasmic reticulum protein 1

Calculated MW:

66 aa, 7 kDa

Observed MW:

10 kDa

Purification Method:

Antigen affinity purification

Recommended Dilutions:

WB 1:500-1:2000

IP 0.5-4.0 µg for 1.0-3.0 mg of total protein lysate

IHC 1:20-1:200

IF 1:50-1:500

Applications

Tested Applications:

IF/ICC, IHC, IP, WB, ELISA

Cited Applications:

WB, IHC

Species Specificity:

human, mouse, rat

Cited Species:

human

Positive Controls:

WB: mouse brain tissue, HeLa cells, mouse pancreas tissue

IP: mouse brain tissue,

IHC: human endometrial cancer tissue,

IF: HeLa cells,

Note-IHC: suggested antigen retrieval with TE buffer pH 9.0; (*) Alternatively, antigen retrieval may be performed with citrate buffer pH 6.0

Background Information

Stress-associated endoplasmic reticulum (ER) protein 1 (SERP1), also known as ribosome-associated membrane protein 4 (RAMP4), is a Sec61-associated polypeptide that is induced by ER stress [PMID:16705175]. SERP1 interacts with target proteins during their translocation into the lumen of the endoplasmic reticulum. It controls glycosylation of major histocompatibility complex class II-associated invariant chains by a translocational pausing mechanism, and its overexpression stabilizes newly synthesized membrane proteins under ER stress by associating with the Sec61 complex [PMID:10601334]. It is suggested SERP1 is involved in the biosynthesis/processing of secretory proteins

Notable Publications

Author	Pubmed ID	Journal	Application
Feng Li	36505280	Am J Transl Res	IHC
Jia-Ni Tian	31461934	Viruses	
Xuan Tan	36952345	Cell Rep	WB

Storage

Storage:

Store at -20°C. Stable for one year after shipment.

Storage Buffer:

PBS with 0.02% sodium azide and 50% glycerol pH 7.3.

Aliquoting is unnecessary for -20°C storage

For technical support and original validation data for this product please contact:

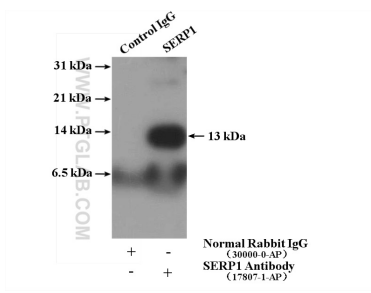
T: 4006900926

E: Proteintech-CN@ptglab.com

W: ptgcn.com

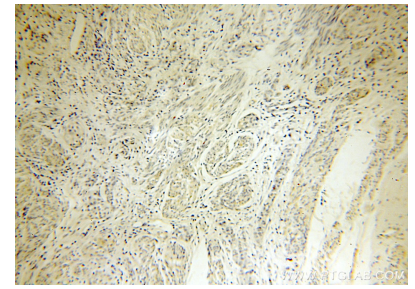
This product is exclusively available under Proteintech Group brand and is not available to purchase from any other manufacturer.

Selected Validation Data

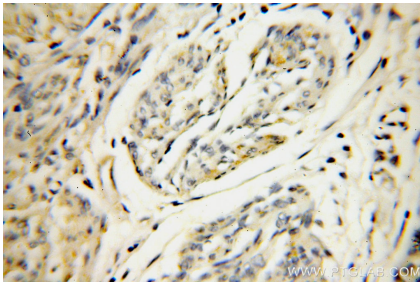


IP result of anti-SERP1 (IP:17807-1-AP, 4 μ g; Detection:17807-1-AP 1:500) with mouse brain tissue lysate 3160 μ g.

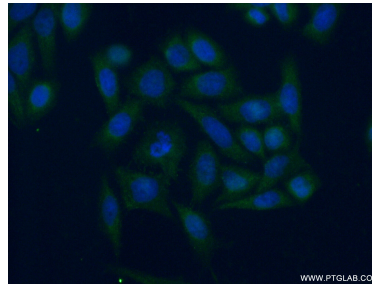
mouse brain tissue were subjected to SDS PAGE followed by western blot with 17807-1-AP (SERP1 antibody) at dilution of 1:500 incubated at room temperature for 1.5 hours.



Immunohistochemical analysis of paraffin-embedded human endometrial cancer using 17807-1-AP (SERP1 antibody) at dilution of 1:100 (under 10x lens).



Immunohistochemical analysis of paraffin-embedded human endometrial cancer using 17807-1-AP (SERP1 antibody) at dilution of 1:100 (under 40x lens).



Immunofluorescent analysis of (-20 $^{\circ}$ C Ethanol) fixed HeLa cells using 17807-1-AP (SERP1 antibody) at dilution of 1:50 and Alexa Fluor 488-conjugated AffiniPure Goat Anti-Rabbit IgG(H+L).