

For Research Use Only

CADM2 Polyclonal antibody

Catalog Number: 17773-1-AP



Basic Information

Catalog Number:

17773-1-AP

Source:

Rabbit

Isotype:

IgG

Immunogen Catalog Number:

AG12191

GenBank Accession Number:

BC105999

GeneID (NCBI):

253559

UNIPROT ID:

Q8N3J6

Full Name:

cell adhesion molecule 2

Calculated MW:

404 aa, 44 kDa

Observed MW:

50-60 kDa

Purification Method:

Antigen affinity purification

Recommended Dilutions:

WB: 1:1000-1:6000

Applications

Tested Applications:

WB, ELISA

Species Specificity:

human, mouse, rat

Positive Controls:

WB : fetal human brain tissue, mouse brain tissue, rat brain tissue

Background Information

CADM2, also known as IGSF4D, NECL3, SYNCAM2, is a member of the synaptic cell adhesion molecule 1 (SynCAM) family which belongs to the immunoglobulin (Ig) superfamily. CADM2 is a conserved modular organization comprising three Ig domains, a single transmembrane pass and a short cytoplasmic region containing 4.1 and PDZ binding motifs. CADM2 is a plasma membrane protein that accumulates in several tissues, including those of the central and peripheral nervous system, where it localizes to myelinated axons and in ependymal cells (PMID: 16311015, 17967169). The molecular weight of the CADM2 protein is approximately 50-60 kDa, which is due to N-linked glycosylation (PMID: 17967169, 21456004).

Storage

Storage:

Store at -20°C. Stable for one year after shipment.

Storage Buffer:

PBS with 0.02% sodium azide and 50% glycerol, pH7.3

Aliquoting is unnecessary for -20°C storage

For technical support and original validation data for this product please contact:

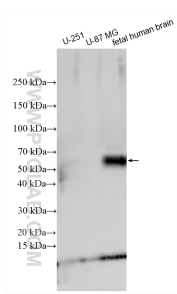
T: 4006900926

E: Proteintech-CN@ptglab.com

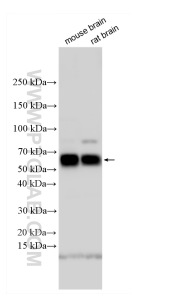
W: ptgcn.com

This product is exclusively available under Proteintech Group brand and is not available to purchase from any other manufacturer.

Selected Validation Data



Various lysates were subjected to SDS PAGE followed by western blot with 17773-1-AP (CADM2 antibody) at dilution of 1:3000 incubated at room temperature for 1.5 hours.



Various lysates were subjected to SDS PAGE followed by western blot with 17773-1-AP (CADM2 antibody) at dilution of 1:3000 incubated at room temperature for 1.5 hours.