

For Research Use Only

MYO1E Polyclonal antibody

Catalog Number: 17768-1-AP

Featured Product

4 Publications



Basic Information

Catalog Number:

17768-1-AP

Size:

450 µg/ml

Source:

Rabbit

Isotype:

IgG

Immunogen Catalog Number:

AG12176

GenBank Accession Number:

BC098392

GeneID (NCBI):

4643

UNIPROT ID:

Q12965

Full Name:

myosin IE

Calculated MW:

1108 aa, 127 kDa

Observed MW:

127 kDa

Purification Method:

Antigen affinity purification

Recommended Dilutions:

WB 1:500-1:2000

IHC 1:50-1:500

Applications

Tested Applications:

WB, IHC, ELISA

Cited Applications:

WB, IF

Species Specificity:

human, mouse, rat

Cited Species:

human, mouse

Note-IHC: suggested antigen retrieval with TE buffer pH 9.0; (*) Alternatively, antigen retrieval may be performed with citrate buffer pH 6.0

Positive Controls:

WB : HeLa cells,

IHC : human lung cancer tissue,

Background Information

MYO1E, also named as Myosin-Ie and MYO1C (distinct from the MYO1C gene located on chromosome 17), encodes a member of the nonmuscle class I myosins which are a subgroup of the unconventional myosin protein family. The unconventional myosin proteins function as actin-based molecular motors. This protein localizes to the cytoplasm and may be involved in intracellular movement and membrane trafficking. Mutations in this gene are the cause of focal segmental glomerulosclerosis-6.

Notable Publications

Author	Pubmed ID	Journal	Application
Jens Wenzel	25263281	Eur J Immunol	WB
Mio Iwasaki	35573189	iScience	
Songbai Liu	37274465	Oncol Lett	WB,IF

Storage

Storage:

Store at -20°C. Stable for one year after shipment.

Storage Buffer:

PBS with 0.02% sodium azide and 50% glycerol pH 7.3.

Aliquoting is unnecessary for -20°C storage

For technical support and original validation data for this product please contact:

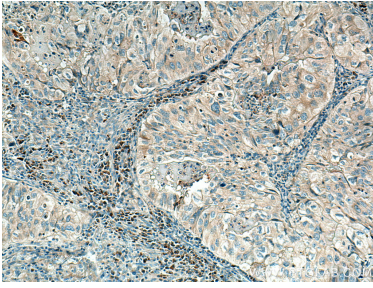
T: 4006900926

E: Proteintech-CN@ptglab.com

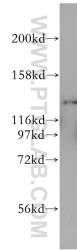
W: ptgcn.com

This product is exclusively available under Proteintech Group brand and is not available to purchase from any other manufacturer.

Selected Validation Data



Immunohistochemical analysis of paraffin-embedded human lung cancer tissue slide using 17768-1-AP (MYO1E antibody) at dilution of 1:200 (under 10x lens). Heat mediated antigen retrieval with Tris-EDTA buffer (pH 9.0).



HeLa cells were subjected to SDS PAGE followed by western blot with 17768-1-AP (MYO1E antibody) at dilution of 1:500 incubated at room temperature for 1.5 hours.