

For Research Use Only

SOHLH1 Polyclonal antibody

Catalog Number: 17753-1-AP **1 Publications**



Basic Information

Catalog Number:

17753-1-AP

Size:

600 µg/ml

Source:

Rabbit

Isotype:

IgG

Immunogen Catalog Number:

AG12107

GenBank Accession Number:

BC031861

GeneID (NCBI):

402381

UNIPROT ID:

Q5JUK2

Full Name:

spermatogenesis and oogenesis
specific basic helix-loop-helix 1

Calculated MW:

328 aa, 34 kDa

Purification Method:

Antigen affinity purification

Recommended Dilutions:

IHC 1:50-1:500

Applications

Tested Applications:

IHC, ELISA

Cited Applications:

WB, IF

Species Specificity:

human

Cited Species:

human

Positive Controls:

IHC : human testis tissue,

Note-IHC: suggested antigen retrieval with TE buffer pH 9.0; (*) Alternatively, antigen retrieval may be performed with citrate buffer pH 6.0

Background Information

Spermatogenesis - and oogenesis - specific helix - loop - helix transcription factor 1 (SOHLH1) is a gonad - specific transcription factor that belongs to the basic - helix - loop - helix (bHLH) transcription factor family. SOHLH1 has a profound effect on the development of germ cells, from SSC self-maintenance to spermatogonium differentiation.

Notable Publications

Author	Pubmed ID	Journal	Application
Mohan Liu	34448846	Hum Mol Genet	WB, IF

Storage

Storage:

Store at -20°C. Stable for one year after shipment.

Storage Buffer:

PBS with 0.02% sodium azide and 50% glycerol pH 7.3.

Aliquoting is unnecessary for -20°C storage

For technical support and original validation data for this product please contact:

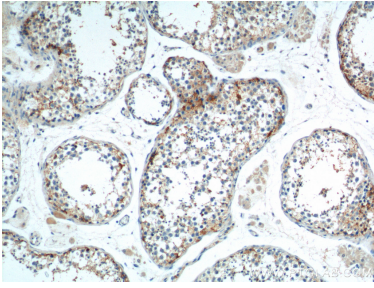
T: 4006900926

E: Proteintech-CN@ptglab.com

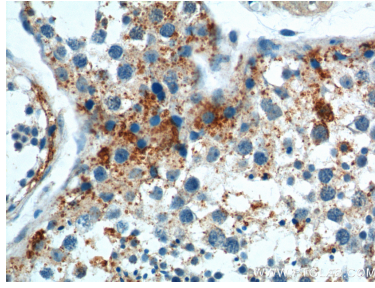
W: ptgcn.com

This product is exclusively available under Proteintech Group brand and is not available to purchase from any other manufacturer.

Selected Validation Data



Immunohistochemical analysis of paraffin-embedded human testis tissue slide using 17753-1-AP (SOHLH1 Antibody) at dilution of 1:100 (under 10x lens).



Immunohistochemical analysis of paraffin-embedded human testis tissue slide using 17753-1-AP (SOHLH1 Antibody) at dilution of 1:100 (under 40x lens).