

For Research Use Only

LSG1 Polyclonal antibody

Catalog Number: 17750-1-AP

Featured Product

3 Publications



Basic Information

Catalog Number:

17750-1-AP

Concentration:

400 µg/ml

Source:

Rabbit

Isotype:

IgG

Immunogen Catalog Number:

AG12016

GenBank Accession Number:

BC068500

GeneID (NCBI):

55341

UNIPROT ID:

Q9H089

Full Name:

large subunit GTPase 1 homolog (S. cerevisiae)

Calculated MW:

658 aa, 75 kDa

Observed MW:

75 kDa

Purification Method:

Antigen affinity purification

Recommended Dilutions:

WB 1:500-1:1000

IP 0.5-4.0 µg for 1.0-3.0 mg of total protein lysate

IHC 1:20-1:200

Applications

Tested Applications:

WB, IP, IHC, ELISA

Cited Applications:

WB, IF

Species Specificity:

human

Cited Species:

human

Note-IHC: suggested antigen retrieval with TE buffer pH 9.0; (*) Alternatively, antigen retrieval may be performed with citrate buffer pH 6.0

Positive Controls:

WB: HeLa cells,

IP: HeLa cells,

IHC: human testis tissue, human kidney tissue, human lung tissue, human ovary tissue, human placenta tissue, human spleen tissue

Background Information

Notable Publications

Author	Pubmed ID	Journal	Application
Asimina Pantazi	31148378	Aging Cell	WB, IF
Léana Gorse	39948420	EMBO Mol Med	
Putri Sutjita	39133101	Mol Cell Biol	WB

Storage

Storage:

Store at -20°C. Stable for one year after shipment.

Storage Buffer:

PBS with 0.02% sodium azide and 50% glycerol, pH7.3

Aliquoting is unnecessary for -20°C storage

For technical support and original validation data for this product please contact:

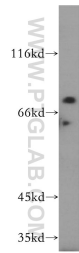
T: 4006900926

E: Proteintech-CN@ptglab.com

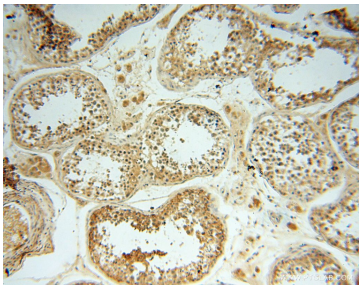
W: ptgcn.com

This product is exclusively available under Proteintech Group brand and is not available to purchase from any other manufacturer.

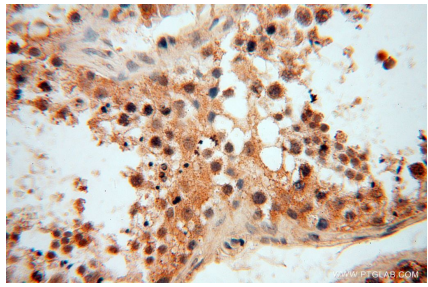
Selected Validation Data



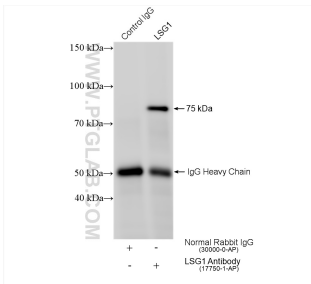
HeLa cells were subjected to SDS PAGE followed by western blot with 17750-1-AP (LSG1 antibody) at dilution of 1:500 incubated at room temperature for 1.5 hours.



Immunohistochemical analysis of paraffin-embedded human testis using 17750-1-AP (LSG1 antibody) at dilution of 1:50 (under 10x lens).



Immunohistochemical analysis of paraffin-embedded human testis using 17750-1-AP (LSG1 antibody) at dilution of 1:50 (under 40x lens).



IP result of anti-LSG1 (IP:17750-1-AP, 4ug; Detection:17750-1-AP 1:500) with HeLa cells lysate 1400 ug.