

For Research Use Only

SPOPL Polyclonal antibody

Catalog Number: 17740-1-AP



Basic Information

Catalog Number: 17740-1-AP	GenBank Accession Number: BC071613	Purification Method: Antigen affinity purification
Size: 240 µg/ml	GeneID (NCBI): 339745	Recommended Dilutions: WB 1:500-1:2000
Source: Rabbit	UNIPROT ID: Q6IQ16	
Isotype: IgG	Full Name: speckle-type POZ protein-like	
Immunogen Catalog Number: AG11951	Calculated MW: 392 aa, 45 kDa	
	Observed MW: 39-45 kDa	

Applications

Tested Applications: WB, ELISA	Positive Controls: WB : HeLa cells, PC-3 cells
Species Specificity: human, mouse, rat	

Background Information

Speckle Type POZ Protein Like (SPOPL), a member of the MATH-BTB protein family, was first identified in 2010 with 82.6% sequence homology with Speckle-type POZ protein (SPOP). SPOPL is an E3 ubiquitin ligase protein that ubiquitinates and degrades the target protein. SPOPL can be used as a potential prognostic biomarker for glioblastoma multiforme in clinical work and promotes the proliferation and stemness of glioma stem cells by activating the Notch signaling pathway (PMID:37523046).

Storage

Storage:
Store at -20°C. Stable for one year after shipment.
Storage Buffer:
PBS with 0.02% sodium azide and 50% glycerol pH 7.3.
Aliquoting is unnecessary for -20°C storage

For technical support and original validation data for this product please contact:

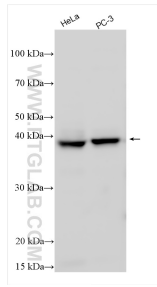
T: 4006900926

E: Proteintech-CN@ptglab.com

W: ptgcn.com

This product is exclusively available under Proteintech Group brand and is not available to purchase from any other manufacturer.

Selected Validation Data



Various lysates were subjected to SDS PAGE followed by western blot with 17740-1-AP (SPOPL antibody) at dilution of 1:1000 incubated at room temperature for 1.5 hours.