

For Research Use Only

# CPSF2 Polyclonal antibody

Catalog Number: 17739-1-AP

2 Publications



## Basic Information

Catalog Number:

17739-1-AP

Size:

450 µg/ml

Source:

Rabbit

Isotype:

IgG

Immunogen Catalog Number:

AG11950

GenBank Accession Number:

BC070095

GeneID (NCBI):

53981

UNIPROT ID:

Q9P2I0

Full Name:

cleavage and polyadenylation  
specific factor 2, 100kDa

Calculated MW:

782 aa, 88 kDa

Observed MW:

100 kDa

Purification Method:

Antigen affinity purification

Recommended Dilutions:

WB 1:1000-1:4000

IP 0.5-4.0 µg for 1.0-3.0 mg of total  
protein lysate

IHC 1:20-1:200

IF/ICC 1:20-1:200

## Applications

Tested Applications:

WB, IHC, IF/ICC, IP, ELISA

Cited Applications:

WB, ColP

Species Specificity:

human, mouse, rat

Cited Species:

human

**Note-IHC: suggested antigen retrieval with  
TE buffer pH 9.0; (\*) Alternatively, antigen  
retrieval may be performed with citrate  
buffer pH 6.0**

Positive Controls:

WB : HeLa cells, human brain tissue, mouse brain  
tissue

IP : HeLa cells,

IHC : human brain tissue,

IF/ICC : HepG2 cells,

## Background Information

### Notable Publications

Author	Pubmed ID	Journal	Application
Geneva R LaForce	35139363	Neuron	ColP
Peng Lin	38503731	Cell Discov	WB

## Storage

Storage:

Store at -20°C. Stable for one year after shipment.

Storage Buffer:

PBS with 0.02% sodium azide and 50% glycerol pH 7.3.

Aliquoting is unnecessary for -20°C storage

For technical support and original validation data for this product please contact:

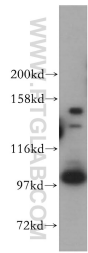
T: 4006900926

E: [Proteintech-CN@ptglab.com](mailto:Proteintech-CN@ptglab.com)

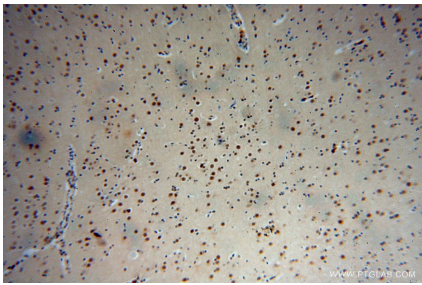
W: [ptgcn.com](http://ptgcn.com)

This product is exclusively available under Proteintech Group brand and is not available to purchase from any other manufacturer.

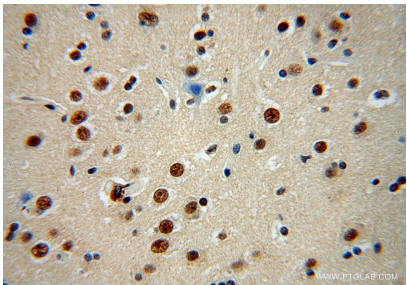
Selected Validation Data



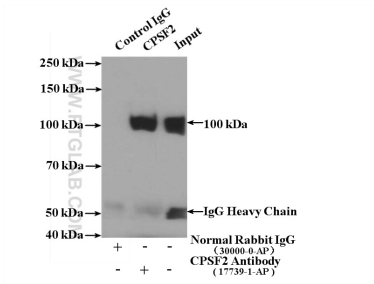
HeLa cells were subjected to SDS PAGE followed by western blot with 17739-1-AP (CPSF2 antibody) at dilution of 1:800 incubated at room temperature for 1.5 hours.



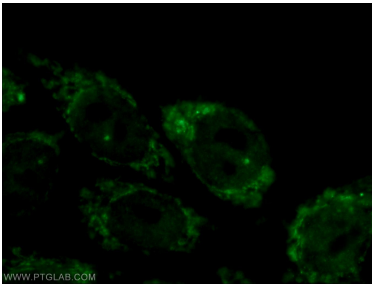
Immunohistochemical analysis of paraffin-embedded human brain using 17739-1-AP (CPSF2 antibody) at dilution of 1:100 (under 10x lens).



Immunohistochemical analysis of paraffin-embedded human brain using 17739-1-AP (CPSF2 antibody) at dilution of 1:100 (under 40x lens).



IP result of anti-CPSF2 (IP:17739-1-AP, 4ug; Detection:17739-1-AP 1:1000) with HeLa cells lysate 4000ug.



Immunofluorescent analysis of HepG2 cells using 17739-1-AP (CPSF2 antibody) at dilution of 1:50 and Alexa Fluor 488-conjugated AffiniPure Goat Anti-Rabbit IgG(H+L).