

For Research Use Only

EDC4 Polyclonal antibody

Catalog Number: 17737-1-AP

Featured Product

10 Publications



Basic Information

Catalog Number:

17737-1-AP

Size:

500 µg/ml

Source:

Rabbit

Isotype:

IgG

Immunogen Catalog Number:

AG11784

GenBank Accession Number:

BC064567

GeneID (NCBI):

23644

UNIPROT ID:

Q6P2E9

Full Name:

enhancer of mRNA decapping 4

Calculated MW:

1401 aa, 152 kDa

Observed MW:

160 kDa

Purification Method:

Antigen affinity purification

Recommended Dilutions:

WB 1:1000-1:6000

IHC 1:300-1:1200

IF/ICC 1:200-1:800

Applications

Tested Applications:

IF/ICC, IHC, WB, ELISA

Cited Applications:

WB, IF

Species Specificity:

human, mouse, rat

Cited Species:

human, mouse

Note-IHC: suggested antigen retrieval with TE buffer pH 9.0; (*) Alternatively, antigen retrieval may be performed with citrate buffer pH 6.0

Positive Controls:

WB : HeLa cells, HepG2 cells

IHC : human liver cancer tissue, human colon cancer tissue

IF/ICC : HeLa cells,

Background Information

Notable Publications

Author	Pubmed ID	Journal	Application
Dongsheng Zhai	36088389	Cell Biosci	WB,IF
Tao Liu	34552820	Mol Ther Nucleic Acids	WB
Dongxu Jiang	29537490	FEBS Lett	IF

Storage

Storage:

Store at -20°C. Stable for one year after shipment.

Storage Buffer:

PBS with 0.02% sodium azide and 50% glycerol pH 7.3.

Aliquoting is unnecessary for -20°C storage

For technical support and original validation data for this product please contact:

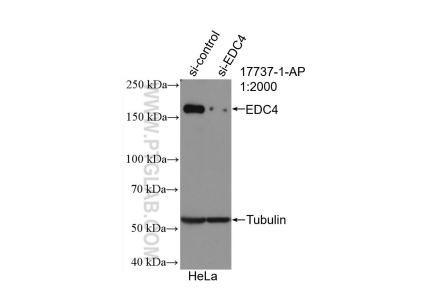
T: 4006900926

E: Proteintech-CN@ptglab.com

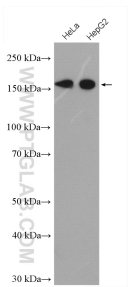
W: ptgcn.com

This product is exclusively available under Proteintech Group brand and is not available to purchase from any other manufacturer.

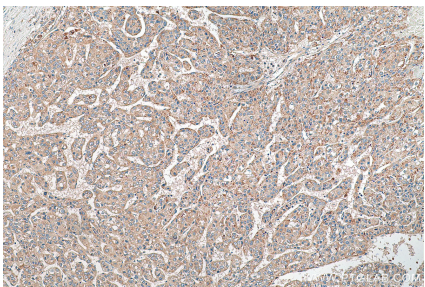
Selected Validation Data



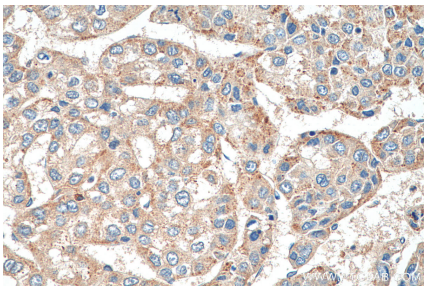
WB result of EDC4 antibody (17737-1-AP; 1:2000; incubated at room temperature for 1.5 hours) with sh-Control and sh-EDC4 transfected HeLa cells.



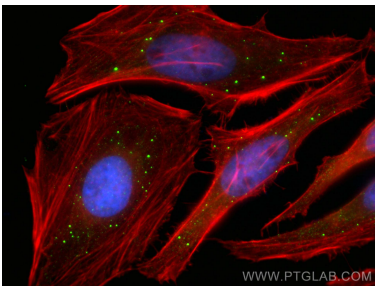
HeLa cells and HepG2 cells were subjected to SDS PAGE followed by western blot with 17737-1-AP (EDC4 antibody) at dilution of 1:3000 incubated at room temperature for 1.5 hours.



Immunohistochemical analysis of paraffin-embedded human liver cancer tissue slide using 17737-1-AP (EDC4 antibody) at dilution of 1:600 (under 10x lens). Heat mediated antigen retrieval with Tris-EDTA buffer (pH 9.0).



Immunohistochemical analysis of paraffin-embedded human liver cancer tissue slide using 17737-1-AP (EDC4 antibody) at dilution of 1:600 (under 40x lens). Heat mediated antigen retrieval with Tris-EDTA buffer (pH 9.0).



Immunofluorescent analysis of (4% PFA) fixed HeLa cells using EDC4 antibody (17737-1-AP) at dilution of 1:400 and CoraLite®488-Conjugated AffiniPure Goat Anti-Rabbit IgG(H+L), CLS94-phalloidin (red).