

For Research Use Only

ATP6V1F Polyclonal antibody

Catalog Number: 17725-1-AP **4 Publications**



Basic Information

Catalog Number: 17725-1-AP	GenBank Accession Number: BC107854	Purification Method: Antigen affinity purification
Size: 500 µg/ml	GeneID (NCBI): 9296	Recommended Dilutions: WB 1:500-1:2000 IHC 1:20-1:200
Source: Rabbit	UNIPROT ID: Q16864	
Isotype: IgG	Full Name: ATPase, H ⁺ transporting, lysosomal 14kDa, V1 subunit F	
Immunogen Catalog Number: AG12121	Calculated MW: 119 aa, 13 kDa	
	Observed MW: 14 kDa	

Applications

Tested Applications:

FC, IHC, WB, ELISA

Cited Applications:

WB, IHC, CoIP

Species Specificity:

human, mouse

Cited Species:

human, rat

Note-IHC: suggested antigen retrieval with TE buffer pH 9.0; (*) Alternatively, antigen retrieval may be performed with citrate buffer pH 6.0

Positive Controls:

WB: MCF7 cells, HeLa cells, Jurkat cells, mouse liver tissue, mouse skeletal muscle tissue

IHC: human testis tissue, human brain tissue, human kidney tissue, human pancreas tissue, human placenta tissue

Background Information

ATP6V1F (V-type proton ATPase subunit F) is also named as ATP6S14, VATF and belongs to the V-ATPase F subunit family. It generates an electrochemical proton gradient that is acid and positive inside synaptic vesicles. ATP6V1F plays a major role as energizers of animal plasma membranes, especially apical plasma membranes of epithelial cells. This protein has 2 isoforms produced by alternative splicing with the molecular weight of 14 kDa and 16 kDa.

Notable Publications

Author	Pubmed ID	Journal	Application
Pan Huang	36620589	Front Oncol	WB
Xiaolu Chen	38266420	J Trace Elem Med Biol	WB
Nur Cengiz Winter	37585105	J Proteome Res	WB, CoIP

Storage

Storage:

Store at -20°C. Stable for one year after shipment.

Storage Buffer:

PBS with 0.02% sodium azide and 50% glycerol pH 7.3.

Aliquoting is unnecessary for -20°C storage

For technical support and original validation data for this product please contact:

T: 4006900926

E: Proteintech-CN@ptglab.com

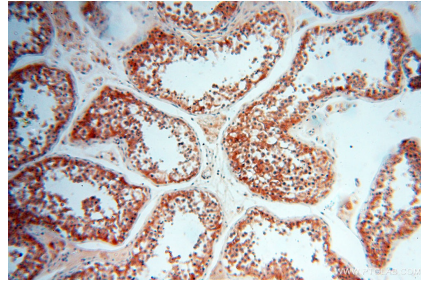
W: ptgcn.com

This product is exclusively available under Proteintech Group brand and is not available to purchase from any other manufacturer.

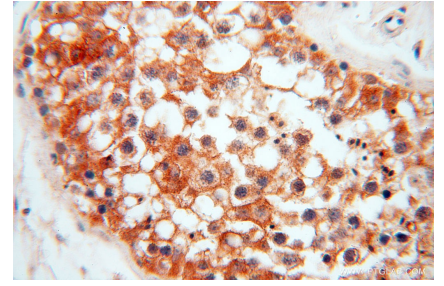
Selected Validation Data



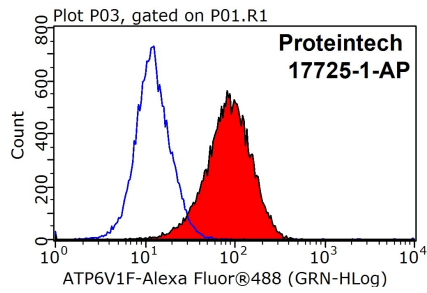
MCF7 cells were subjected to SDS PAGE followed by western blot with 17725-1-AP (ATP6V1F antibody) at dilution of 1:1000 incubated at room temperature for 1.5 hours.



Immunohistochemical analysis of paraffin-embedded human testis using 17725-1-AP (ATP6V1F antibody) at dilution of 1:50 (under 10x lens).



Immunohistochemical analysis of paraffin-embedded human testis using 17725-1-AP (ATP6V1F antibody) at dilution of 1:50 (under 40x lens).



1X10⁶ MCF-7 cells were stained with 0.2ug ATP6V1F antibody (17725-1-AP, red) and control antibody (blue). Fixed with 90% MeOH blocked with 3% BSA (30 min). Alexa Fluor 488-conjugated AffiniPure Goat Anti-Rabbit IgG(H+L) with dilution 1:1000.