

For Research Use Only

# EB1 Polyclonal antibody

Catalog Number: 17717-1-AP

Featured Product

5 Publications



## Basic Information

### Catalog Number:

17717-1-AP

### Source:

Rabbit

### Isotype:

IgG

### Immunogen Catalog Number:

AG12092

### GenBank Accession Number:

BC106068

### GeneID (NCBI):

22919

### UNIPROT ID:

Q15691

### Full Name:

microtubule-associated protein, RP/EB family, member 1

### Calculated MW:

268 aa, 30 kDa

### Observed MW:

35 kDa

### Purification Method:

Antigen affinity purification

### Recommended Dilutions:

WB: 1:500-1:3000

IP: 0.5-4.0 ug for 1.0-3.0 mg of total protein lysate

IHC: 1:100-1:400

IF/ICC: 1:200-1:800

FC (Intra): 0.40 ug per 10<sup>6</sup> cells in a 100 µl suspension

## Applications

### Tested Applications:

WB, IHC, IF/ICC, FC (Intra), IP, ELISA

### Cited Applications:

IF

### Species Specificity:

human, mouse

### Cited Species:

human, mouse

**Note-IHC: suggested antigen retrieval with TE buffer pH 9.0; (\*) Alternatively, antigen retrieval may be performed with citrate buffer pH 6.0**

### Positive Controls:

WB: HeLa cells, Jurkat cells, A431 cells

IP: HeLa cells, Caco-2 cells, mouse thymus tissue

IHC: human kidney tissue, human placenta tissue, human testis tissue, human skin tissue, human spleen tissue, human lung tissue, human normal colon, human colon cancer tissue

IF/ICC: HeLa cells,

FC (Intra): HeLa cells,

## Background Information

## Notable Publications

Author	Pubmed ID	Journal	Application
Peihong Su	32139394	Biol Open	IF
Peihong Su	34004757	Biol Open	IF
Dandan Ma	35119360	Elife	IF

## Storage

### Storage:

Store at -20°C. Stable for one year after shipment.

### Storage Buffer:

PBS with 0.02% sodium azide and 50% glycerol, pH7.3

Aliquoting is unnecessary for -20°C storage

For technical support and original validation data for this product please contact:

T: 4006900926

E: [Proteintech-CN@ptglab.com](mailto:Proteintech-CN@ptglab.com)

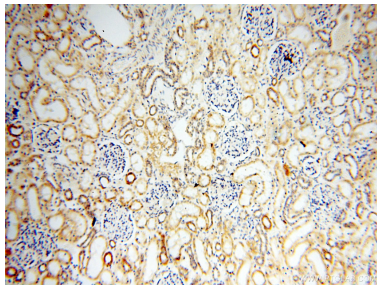
W: [ptgcn.com](http://ptgcn.com)

**This product is exclusively available under Proteintech Group brand and is not available to purchase from any other manufacturer.**

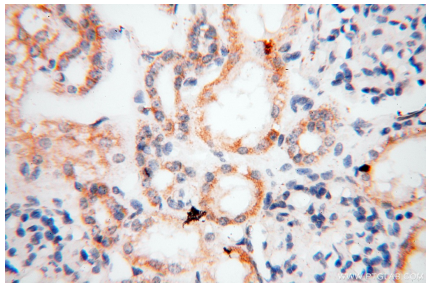
Selected Validation Data



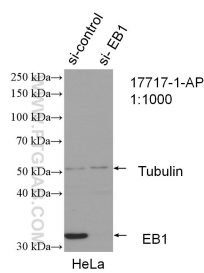
HeLa cells were subjected to SDS PAGE followed by western blot with 17717-1-AP (MAPRE1 antibody) at dilution of 1:500 incubated at room temperature for 1.5 hours.



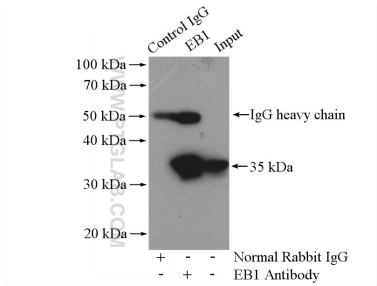
Immunohistochemical analysis of paraffin-embedded human kidney using 17717-1-AP (MAPRE1 antibody) at dilution of 1:100 (under 10x lens).



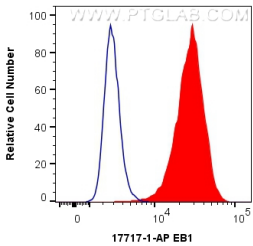
Immunohistochemical analysis of paraffin-embedded human kidney using 17717-1-AP (MAPRE1 antibody) at dilution of 1:100 (under 40x lens).



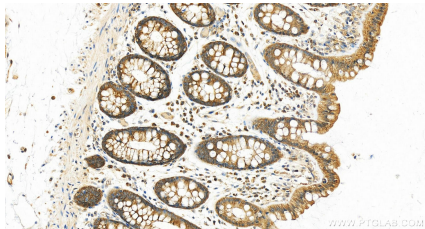
WB result of EB1 antibody (17717-1-AP; 1:1000; incubated at room temperature for 1.5 hours) with si-Control and sh-EB1 transfected HeLa cells.



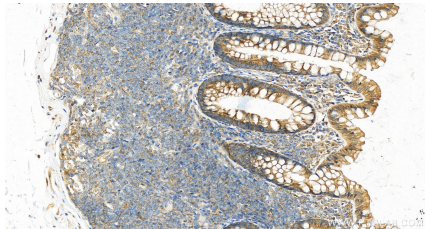
IP result of anti-EB1 (IP:17717-1-AP, 4ug; Detection:17717-1-AP 1:1000) with HeLa cells lysate 1200ug.



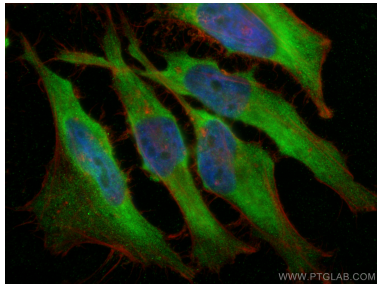
1X10<sup>6</sup> HeLa cells were intracellularly stained with 0.4 ug Anti-Human EB1 (17717-1-AP) and CoraLite®488-Conjugated AffiniPure Goat Anti-Rabbit IgG(H+L) at dilution 1:1000 (red), or 0.4 ug Control Antibody. Cells were fixed with 4% PFA and permeabilized with Flow Cytometry Perm Buffer.



Immunohistochemical analysis of paraffin-embedded human normal colon slide using 17717-1-AP (EB1 antibody) at dilution of 1:300 (under 20x lens). Heat mediated antigen retrieval with Tris-EDTA buffer (pH 9.0).



Immunohistochemical analysis of paraffin-embedded human normal colon slide using 17717-1-AP (EB1 antibody) at dilution of 1:300 (under 20x lens). Heat mediated antigen retrieval with Tris-EDTA buffer (pH 9.0).



Immunofluorescent analysis of (4% PFA) fixed HeLa cells using EB1 antibody (17717-1-AP) at dilution of 1:400 and CoraLite®488-Conjugated AffiniPure Goat Anti-Rabbit IgG(H+L), CL594-Phalloidin (red).