

For Research Use Only

OCRL Polyclonal antibody

Catalog Number: 17695-1-AP

Featured Product

6 Publications



Basic Information

Catalog Number:

17695-1-AP

Concentration:

500 µg/ml

Source:

Rabbit

Isotype:

IgG

Immunogen Catalog Number:

AG11900

GenBank Accession Number:

BC094726

GeneID (NCBI):

4952

UNIPROT ID:

Q01968

Full Name:

oculocerebrorenal syndrome of Lowe

Calculated MW:

893 aa, 103 kDa

Observed MW:

105 kDa

Purification Method:

Antigen affinity purification

Recommended Dilutions:

WB 1:500-1:2000

IP 0.5-4.0 µg for 1.0-3.0 mg of total protein lysate

IHC 1:100-1:400

Applications

Tested Applications:

WB, IP, IHC, ELISA

Cited Applications:

WB, IHC, IF

Species Specificity:

human, mouse, rat

Cited Species:

human, mouse

Note-IHC: suggested antigen retrieval with TE buffer pH 9.0; (*) Alternatively, antigen retrieval may be performed with citrate buffer pH 6.0

Positive Controls:

WB : HeLa cells, HEK-293 cells, mouse brain tissue, rat brain tissue, SH-SY5Y cells

IP : HeLa cells,

IHC : mouse kidney tissue,

Background Information

OCRL is also named as INPP5F, OCRL1 and belongs to the 5-phosphatase gene family and that Lowe syndrome represents an inborn error of inositol phosphate metabolism (PMID: 9430698). The protein product of the gene that when mutated is responsible for Lowe syndrome, or oculocerebrorenal syndrome (OCRL), is an inositol polyphosphate 5-phosphatase. It may function in lysosomal membrane trafficking by regulating the specific pool of phosphatidylinositol 4,5-bisphosphate that is associated with lysosomes. It has 2 isoforms produced by alternative splicing. Defects in OCRL are the cause of Lowe oculocerebrorenal syndrome (OCRL) and Dent disease type 2 (DD2). This antibody is specific to OCRL.

Notable Publications

| Author | Pubmed ID | Journal | Application |
|-----------------|-----------|-------------------------|-------------|
| Nana Sakakibara | 34586410 | Nephrol Dial Transplant | WB |
| Yu Zhang | 34488756 | BMC Med Genomics | IHC |
| Hequn Liu | 32393163 | J Neurodev Disord | WB |

Storage

Storage:

Store at -20°C. Stable for one year after shipment.

Storage Buffer:

PBS with 0.02% sodium azide and 50% glycerol, pH7.3

Aliquoting is unnecessary for -20°C storage

For technical support and original validation data for this product please contact:

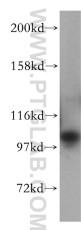
T: 4006900926

E: Proteintech-CN@ptglab.com

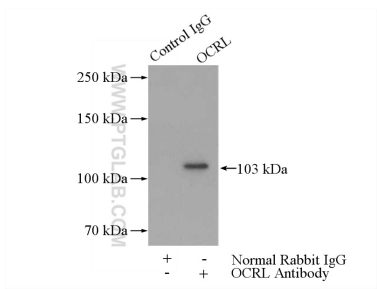
W: ptgcn.com

This product is exclusively available under Proteintech Group brand and is not available to purchase from any other manufacturer.

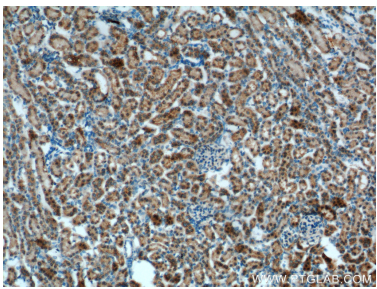
Selected Validation Data



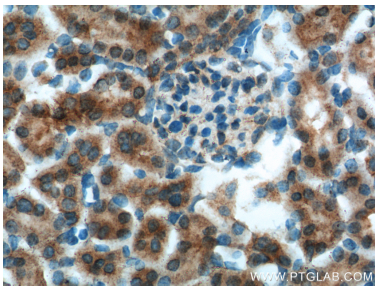
HeLa cells were subjected to SDS PAGE followed by western blot with 17695-1-AP (OCRL antibody) at dilution of 1:300 incubated at room temperature for 1.5 hours.



IP result of anti-OCRL (IP:17695-1-AP, 4ug; Detection:17695-1-AP 1:300) with HeLa cells lysate 1080ug.



Immunohistochemical analysis of paraffin-embedded mouse kidney tissue slide using 17695-1-AP (OCRL Antibody) at dilution of 1:200 (under 10x lens). Heat mediated antigen retrieval with Tris-EDTA buffer (pH 9.0).



Immunohistochemical analysis of paraffin-embedded mouse kidney tissue slide using 17695-1-AP (OCRL Antibody) at dilution of 1:200 (under 40x lens). Heat mediated antigen retrieval with Tris-EDTA buffer (pH 9.0).