

For Research Use Only

SH3BP4 Polyclonal antibody

Catalog Number: 17691-1-AP

Featured Product

3 Publications



Basic Information

Catalog Number:

17691-1-AP

Size:

800 µg/ml

Source:

Rabbit

Isotype:

IgG

Immunogen Catalog Number:

AG11847

GenBank Accession Number:

BC057396

GeneID (NCBI):

23677

UNIPROT ID:

Q9P0V3

Full Name:

SH3-domain binding protein 4

Calculated MW:

963 aa, 108 kDa

Observed MW:

120 kDa

Purification Method:

Antigen affinity purification

Recommended Dilutions:

WB 1:500-1:2000

IP 0.5-4.0 µg for 1.0-3.0 mg of total protein lysate

IF/ICC 1:20-1:200

Applications

Tested Applications:

IF/ICC, IP, WB, ELISA

Cited Applications:

WB

Species Specificity:

human, mouse, rat

Cited Species:

human, pig

Positive Controls:

WB : HeLa cells, mouse lung tissue

IP : mouse lung tissue,

IF/ICC : HeLa cells,

Background Information

Notable Publications

Author	Pubmed ID	Journal	Application
Joanne Watson	36329028	Nat Commun	
Agus Suryawan	31944890	J Appl Physiol (1985)	WB
Kyu-Han Kim	28819321	Exp Mol Med	WB

Storage

Storage:

Store at -20°C. Stable for one year after shipment.

Storage Buffer:

PBS with 0.02% sodium azide and 50% glycerol pH 7.3.

Aliquoting is unnecessary for -20°C storage

For technical support and original validation data for this product please contact:

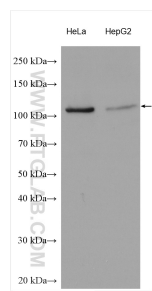
T: 4006900926

E: Proteintech-CN@ptglab.com

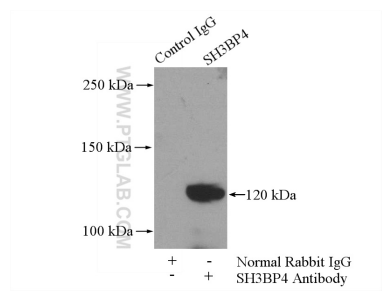
W: ptgcn.com

This product is exclusively available under Proteintech Group brand and is not available to purchase from any other manufacturer.

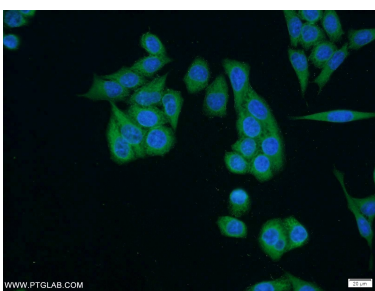
Selected Validation Data



Various lysates were subjected to SDS PAGE followed by western blot with 17691-1-AP (SH3BP4 antibody) at dilution of 1:1000 incubated at room temperature for 1.5 hours.



IP result of anti-SH3BP4 (IP:17691-1-AP, 4ug; Detection:17691-1-AP 1:300) with mouse lung tissue lysate 3600ug.



Immunofluorescent analysis of HeLa cells using 17691-1-AP (SH3BP4 antibody) at dilution of 1:50 and Alexa Fluor 488-conjugated AffiniPure Goat Anti-Rabbit IgG(H+L).