

For Research Use Only

CPNE2 Polyclonal antibody, PBS Only

Catalog Number:17664-1-PBS



Basic Information

Catalog Number: 17664-1-PBS	GenBank Accession Number: BC053658	Purification Method: Antigen affinity purification
Size: 1 mg/ml	GeneID (NCBI): 221184	
Source: Rabbit	UNIPROT ID: Q96FN4	
Isotype: IgG	Full Name: copine II	
Immunogen Catalog Number: AG11946	Calculated MW: 548 aa, 61 kDa	
	Observed MW: 61 kDa	

Applications

Tested Applications:
WB, IHC, Indirect ELISA

Species Specificity:
human, mouse, rat

Background Information

Copines are a family of evolutionarily conserved calcium-dependent phospholipid-binding proteins (PMID: 9430674). They contain two Ca(2+)- and phospholipid-binding domains known as C2 domains. Copines are potentially involved in regulating membrane trafficking and in protein-protein interactions.

Storage

Storage:
Store at -80°C.
The product is shipped with ice packs. Upon receipt, store it immediately at -80°C

Storage Buffer:
PBS Only

For technical support and original validation data for this product please contact:

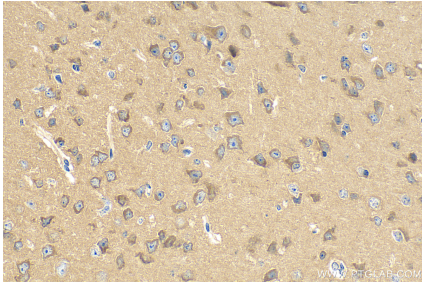
T: 4006900926

E: Proteintech-CN@ptglab.com

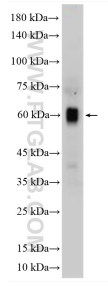
W: ptgcn.com

This product is exclusively available under Proteintech Group brand and is not available to purchase from any other manufacturer.

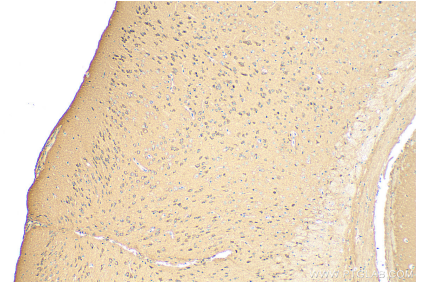
Selected Validation Data



Immunohistochemical analysis of paraffin-embedded mouse brain tissue slide using 17664-1-AP (CPNE2 antibody) at dilution of 1:200 (under 40x lens). Heat mediated antigen retrieval with Tris-EDTA buffer (pH 9.0). This data was developed using the same antibody clone with 17664-1-PBS in a different storage buffer formulation.



mouse brain tissue were subjected to SDS PAGE followed by western blot with 17664-1-AP (CPNE2 antibody) at dilution of 1:500 incubated at room temperature for 1.5 hours. This data was developed using the same antibody clone with 17664-1-PBS in a different storage buffer formulation.



Immunohistochemical analysis of paraffin-embedded mouse brain tissue slide using 17664-1-AP (CPNE2 antibody) at dilution of 1:200 (under 10x lens). Heat mediated antigen retrieval with Tris-EDTA buffer (pH 9.0). This data was developed using the same antibody clone with 17664-1-PBS in a different storage buffer formulation.