

For Research Use Only

LGR6 Polyclonal antibody, PBS Only

Catalog Number: 17658-1-PBS

Featured Product



Basic Information

Catalog Number:

17658-1-PBS

Concentration:

1 mg/ml

Source:

Rabbit

Isotype:

IgG

Immunogen Catalog Number:

AG11909

GenBank Accession Number:

BC047905

GeneID (NCBI):

59352

UNIPROT ID:

Q9HBX8

Full Name:

leucine-rich repeat-containing G
protein-coupled receptor 6

Calculated MW:

915 aa, 99 kDa

Observed MW:

104 kDa

Purification Method:

Antigen affinity purification

Applications

Tested Applications:

WB, IHC, ELISA

Species Specificity:

human, mouse, rat

Background Information

LGR6 (Leucine-rich repeat-containing G-protein coupled receptor 6) is a seven-transmembrane protein. LGR6 is a high affinity receptor of R-spondins that potentiates the canonical Wnt signaling pathway and acts as a marker of multipotent stem cells in the epidermis. It potentially functions as a tumor suppressor. (PMID: 20223988; 20417836; 22615920)

Storage

Storage:

Store at -80°C.

The product is shipped with ice packs. Upon receipt, store it immediately at -80°C

Storage Buffer:

PBS Only

For technical support and original validation data for this product please contact:

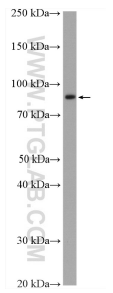
T: 4006900926

E: Proteintech-CN@ptglab.com

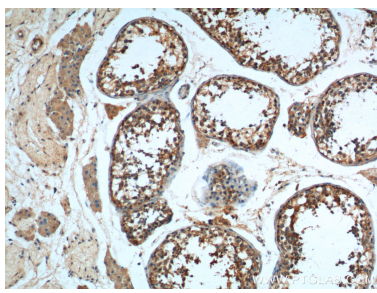
W: ptgcn.com

This product is exclusively available under Proteintech Group brand and is not available to purchase from any other manufacturer.

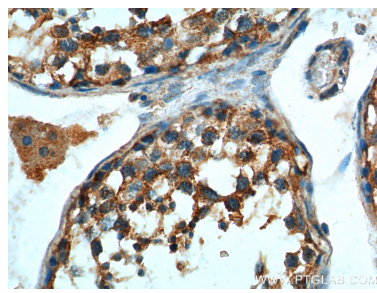
Selected Validation Data



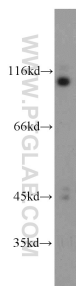
HUVEC cells were subjected to SDS PAGE followed by western blot with 17658-1-AP (LGR6 antibody) at dilution of 1:600 incubated at room temperature for 1.5 hours. This data was developed using the same antibody clone with 17658-1-PBS in a different storage buffer formulation.



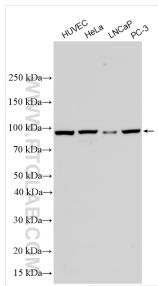
Immunohistochemical analysis of paraffin-embedded human testis tissue slide using 17658-1-AP (LGR6 Antibody) at dilution of 1:200 (under 10x lens). This data was developed using the same antibody clone with 17658-1-PBS in a different storage buffer formulation.



Immunohistochemical analysis of paraffin-embedded human testis tissue slide using 17658-1-AP (LGR6 Antibody) at dilution of 1:200 (under 40x lens). This data was developed using the same antibody clone with 17658-1-PBS in a different storage buffer formulation.



mouse testis tissue were subjected to SDS PAGE followed by western blot with 17658-1-AP (LGR6 antibody) at dilution of 1:100 incubated at room temperature for 1.5 hours. This data was developed using the same antibody clone with 17658-1-PBS in a different storage buffer formulation.



Various lysates were subjected to SDS PAGE followed by western blot with 17658-1-AP (LGR6 antibody) at dilution of 1:1000 incubated at room temperature for 1.5 hours. This data was developed using the same antibody clone with 17658-1-PBS in a different storage buffer formulation.