

For Research Use Only

# SPCS3 Polyclonal antibody, PBS Only

Catalog Number: 17640-1-PBS



## Basic Information

Catalog Number:

17640-1-PBS

Source:

Rabbit

Isotype:

IgG

Immunogen Catalog Number:

AG11780

GenBank Accession Number:

BC047290

GeneID (NCBI):

60559

UNIPROT ID:

P61009

Full Name:

signal peptidase complex subunit 3  
homolog (S. cerevisiae)

Calculated MW:

180 aa, 20 kDa

Observed MW:

23 kDa

Purification Method:

Antigen affinity purification

## Applications

Tested Applications:

WB, IHC, Indirect ELISA

Species Specificity:

human, mouse, rat

## Background Information

The microsomal signal peptidase complex (SPC), which is an essential membrane component in the endoplasmic reticulum (ER), has five subunits, including SEC11A, SEC11C, SPCS1, SPCS2, and SPCS3. Functionally, SPC removes signal peptides (SPs) from a series of secretory pre-proteins with high specificity. The dysregulation of the other SPC subunits was also observed in some tumors. SPCS3 expression can be used as a component of a risk score model to predict the survival of patients with pancreatic adenocarcinoma. (PMID: 35653344)

## Storage

Storage:

Store at -80°C.

The product is shipped with ice packs. Upon receipt, store it immediately at -80°C

Storage Buffer:

PBS only, pH7.3

For technical support and original validation data for this product please contact:

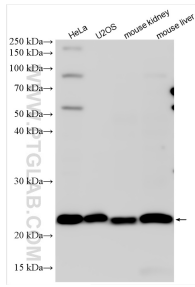
T: 4006900926

E: [Proteintech-CN@ptglab.com](mailto:Proteintech-CN@ptglab.com)

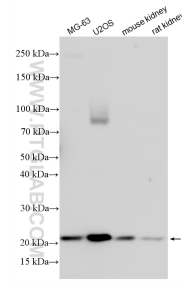
W: [ptgcn.com](http://ptgcn.com)

This product is exclusively available under Proteintech Group brand and is not available to purchase from any other manufacturer.

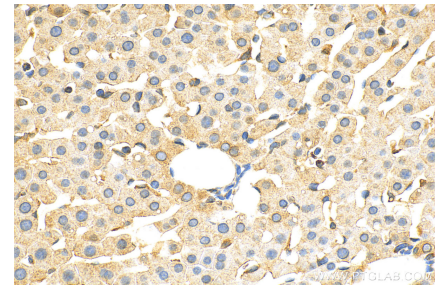
## Selected Validation Data



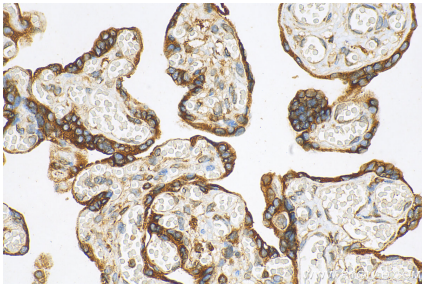
Various lysates were subjected to SDS PAGE followed by western blot with 17640-1-AP (SPCS3 antibody) at dilution of 1:2000 incubated at room temperature for 1.5 hours. This data was developed using the same antibody clone with 17640-1-PBS in a different storage buffer formulation.



Various lysates were subjected to SDS PAGE followed by western blot with 17640-1-AP (SPCS3 antibody) at dilution of 1:4000 incubated at room temperature for 1.5 hours. This data was developed using the same antibody clone with 17640-1-PBS in a different storage buffer formulation.



Immunohistochemical analysis of paraffin-embedded rat liver tissue slide using 17640-1-AP (SPCS3 antibody) at dilution of 1:200 (under 40x lens). Heat mediated antigen retrieval with Tris-EDTA buffer (pH 9.0). This data was developed using the same antibody clone with 17640-1-PBS in a different storage buffer formulation.



Immunohistochemical analysis of paraffin-embedded human placenta tissue slide using 17640-1-AP (SPCS3 antibody) at dilution of 1:200 (under 40x lens). Heat mediated antigen retrieval with Tris-EDTA buffer (pH 9.0). This data was developed using the same antibody clone with 17640-1-PBS in a different storage buffer formulation.