

For Research Use Only

# CDON Polyclonal antibody

Catalog Number: 17634-1-AP

1 Publications



## Basic Information

Catalog Number:

17634-1-AP

Size:

750 µg/ml

Source:

Rabbit

Isotype:

IgG

Immunogen Catalog Number:

AG11904

GenBank Accession Number:

BC098583

GeneID (NCBI):

50937

UNIPROT ID:

Q4KMG0

Full Name:

Cdon homolog (mouse)

Calculated MW:

1287 aa, 140 kDa

Observed MW:

190 kDa

Purification Method:

Antigen affinity purification

Recommended Dilutions:

WB 1:1000-1:6000

## Applications

Tested Applications:

WB, ELISA

Cited Applications:

WB

Species Specificity:

human, mouse, rat

Cited Species:

rat

Positive Controls:

WB : HeLa cells, SH-SY5Y cells

## Background Information

Cell adhesion molecule-related/down-regulated by oncogenes (CDO), also known as CDON, is an orphan cell surface receptor belonging to the immunoglobulin superfamily. CDON possesses five Ig-like domains, with three FNIII-like repeats in the extracellular region, a transmembrane domain, and a cytoplasmic tail. CDON plays an important role in the active regulation of myogenic differentiation. The predicted molecular weight of CDON is 139 kDa, and the bands of 190 kDa may be due to glycosylation

## Notable Publications

Author	Pubmed ID	Journal	Application
Jia-Bao Zhao	38823465	Microb Pathog	WB

## Storage

Storage:

Store at -20°C. Stable for one year after shipment.

Storage Buffer:

PBS with 0.02% sodium azide and 50% glycerol pH 7.3.

Aliquoting is unnecessary for -20°C storage

For technical support and original validation data for this product please contact:

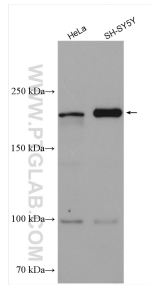
T: 4006900926

E: [Proteintech-CN@ptglab.com](mailto:Proteintech-CN@ptglab.com)

W: [ptgcn.com](http://ptgcn.com)

This product is exclusively available under Proteintech Group brand and is not available to purchase from any other manufacturer.

## Selected Validation Data



Various lysates were subjected to SDS PAGE followed by western blot with 17634-1-AP (CDON antibody) at dilution of 1:3000 incubated at room temperature for 1.5 hours.