

MSRB2 Polyclonal antibody

Catalog Number: 17629-1-AP

Featured Product

8 Publications

Basic Information

Catalog Number:

17629-1-AP

Size:

500 µg/ml

Source:

Rabbit

Isotype:

IgG

Immunogen Catalog Number:

AG11881

GenBank Accession Number:

BC018030

GeneID (NCBI):

22921

UNIPROT ID:

Q9Y3D2

Full Name:

methionine sulfoxide reductase B2

Calculated MW:

182 aa, 20 kDa

Observed MW:

19 kDa

Purification Method:

Antigen affinity purification

Recommended Dilutions:

WB 1:500-1:1000

IHC 1:100-1:400

Applications

Tested Applications:

IHC, WB, ELISA

Cited Applications:

WB

Species Specificity:

human, mouse, rat

Cited Species:

human, rat, mouse

Note-IHC: suggested antigen retrieval with TE buffer pH 9.0; (*) Alternatively, antigen retrieval may be performed with citrate buffer pH 6.0

Positive Controls:

WB : mouse brain tissue, human heart tissue, mouse heart tissue, rat brain tissue

IHC : human kidney tissue,

Background Information

Methionine sulfoxide reductase B2 (MSRB2), is a 182-amino acid protein with an N-terminal mitochondrial targeting signal, a catalytic cysteine, and 2 zinc-coordinating CxxC motifs. MSRB can catalyze the stereospecific reduction of methionine-R-sulfoxides to methionines. MSRB2 protects mitochondrial integrity and cell survival by scavenging reactive oxygen species.

Notable Publications

Author	Pubmed ID	Journal	Application
Beibei Tao	28979207	Front Pharmacol	WB
Lo Lai	31606431	Free Radic Biol Med	WB
Zhengxuan Wang	32163604	J Food Biochem	WB

Storage

Storage:

Store at -20°C. Stable for one year after shipment.

Storage Buffer:

PBS with 0.02% sodium azide and 50% glycerol pH 7.3.

Aliquoting is unnecessary for -20°C storage

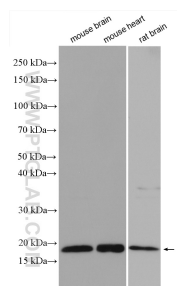
For technical support and original validation data for this product please contact:

T: 4006900926

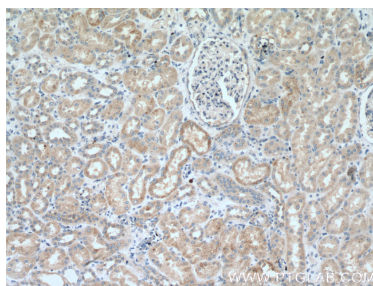
E: Proteintech-CN@ptglab.comW: ptgcn.com

This product is exclusively available under Proteintech Group brand and is not available to purchase from any other manufacturer.

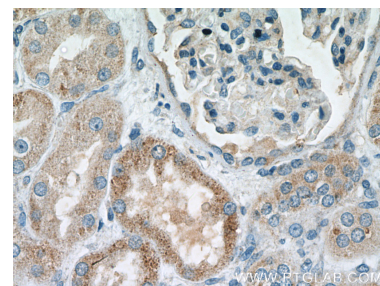
Selected Validation Data



Various lysates were subjected to SDS PAGE followed by western blot with 17629-1-AP (MSRB2 antibody) at dilution of 1:600 incubated at room temperature for 1.5 hours.



Immunohistochemical analysis of paraffin-embedded human kidney tissue slide using 17629-1-AP (MSRB2 Antibody) at dilution of 1:200 (under 10x lens).



Immunohistochemical analysis of paraffin-embedded human kidney tissue slide using 17629-1-AP (MSRB2 Antibody) at dilution of 1:200 (under 40x lens).