

For Research Use Only

RPL26 Polyclonal antibody

Catalog Number: 17619-1-AP

Featured Product

11 Publications



Basic Information

Catalog Number:

17619-1-AP

Concentration:

500 µg/ml

Source:

Rabbit

Isotype:

IgG

Immunogen Catalog Number:

AG11821

GenBank Accession Number:

BC071664

GeneID (NCBI):

6154

UNIPROT ID:

P61254

Full Name:

ribosomal protein L26

Calculated MW:

145 aa, 17 kDa

Observed MW:

17-22 kDa

Purification Method:

Antigen affinity purification

Recommended Dilutions:

WB: 1:500-1:1000

IF/ICC: 1:50-1:500

Applications

Tested Applications:

WB, IF/ICC, ELISA

Cited Applications:

WB, IHC, CoIP

Species Specificity:

human

Cited Species:

human, mouse, monkey, c.elegans

Positive Controls:

WB : K-562 cells, HeLa cells, HepG2 cells, Jurkat cells

IF/ICC : HeLa cells,

Background Information

Notable Publications

Author	Pubmed ID	Journal	Application
Meijuan Zou	33371207	Genes (Basel)	WB
Wonyul Jang	36520888	Science	WB
Sunwang Xu	31792210	Nat Commun	WB

Storage

Storage:

Store at -20°C. Stable for one year after shipment.

Storage Buffer:

PBS with 0.02% sodium azide and 50% glycerol, pH7.3

Aliquoting is unnecessary for -20°C storage

For technical support and original validation data for this product please contact:

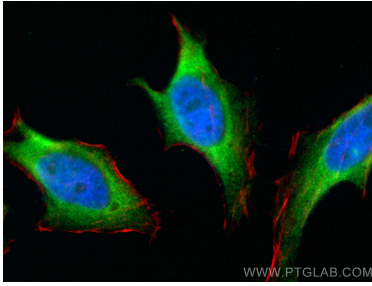
T: 4006900926

E: Proteintech-CN@ptglab.com

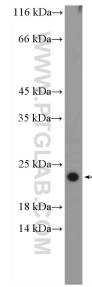
W: ptgcn.com

This product is exclusively available under Proteintech Group brand and is not available to purchase from any other manufacturer.

Selected Validation Data



Immunofluorescent analysis of (4% PFA) fixed HeLa cells using RPL26 antibody (17619-1-AP) at dilution of 1:200 and CoraLite®488-Conjugated Goat Anti-Rabbit IgG(H+L), CL594-phalloidin (red).



K-562 cells were subjected to SDS PAGE followed by western blot with 17619-1-AP (RPL26 Antibody) at dilution of 1:600 incubated at room temperature for 1.5 hours.