

For Research Use Only

SBDS Polyclonal antibody

Catalog Number: 17618-1-AP **4 Publications**



Basic Information

Catalog Number: 17618-1-AP	GenBank Accession Number: BC065700	Purification Method: Antigen affinity purification
Source: Rabbit	GeneID (NCBI): 51119	Recommended Dilutions: WB: 1:500-1:2000
Isotype: IgG	UNIPROT ID: Q9Y3A5	IP: 0.5-4.0 ug for 1.0-3.0 mg of total protein lysate
Immunogen Catalog Number: AG11814	Full Name: Shwachman-Bodian-Diamond syndrome	IHC: 1:50-1:500
	Calculated MW: 250 aa, 29 kDa	
	Observed MW: 29 kDa	

Applications

Tested Applications: WB, IHC, IP, ELISA	Positive Controls: WB : Caco-2 cells, HL-60 cells, SH-SY5Y cells, HEK-293T cells
Cited Applications: WB, IHC, IF	IP : HL-60 cells,
Species Specificity: human, mouse, rat	IHC : human pancreas cancer tissue,
Cited Species: human, rat	
Note-IHC: suggested antigen retrieval with TE buffer pH 9.0; (*) Alternatively, antigen retrieval may be performed with citrate buffer pH 6.0	

Background Information

Shwachman-Bodian-Diamond syndrome (SBDS) is a member of a highly conserved protein family that exists from archaea to vertebrates and plants. The protein may function in RNA metabolism. Mutations within its gene are associated with Shwachman-Bodian-Diamond syndrome. This gene encodes a member of a highly conserved protein family that exists from archaea to vertebrates and plants. The encoded protein may function in RNA metabolism. Mutations within this gene are associated with Shwachman-Bodian-Diamond syndrome. An alternative transcript has been described, but its biological nature has not been determined. This gene has a closely linked pseudogene that is distally located. This antibody is a rabbit polyclonal antibody raised against a full-length human SBDS protein, recognizes specifically the 29kd SBDS protein.

Notable Publications

Author	Pubmed ID	Journal	Application
Pan Luo	31923455	Brain Res Bull	WB
D Tong	27991916	Oncogenesis	WB
Yanchao Yu	40126530	Cancer Res	WB

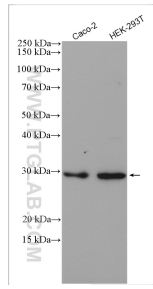
Storage

Storage:
Store at -20°C. Stable for one year after shipment.
Storage Buffer:
PBS with 0.02% sodium azide and 50% glycerol, pH7.3
Aliquoting is unnecessary for -20°C storage

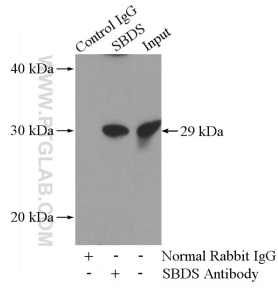
For technical support and original validation data for this product please contact:
T: 4006900926 E: Proteintech-CN@ptglab.com W: ptgcn.com

This product is exclusively available under Proteintech Group brand and is not available to purchase from any other manufacturer.

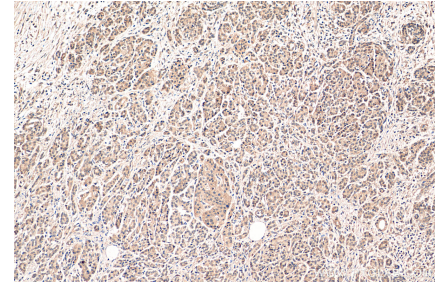
Selected Validation Data



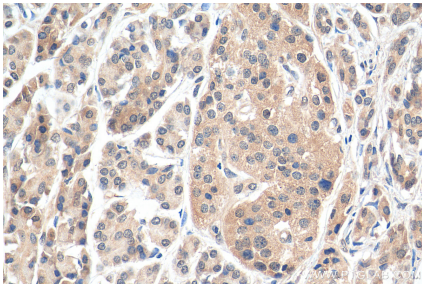
Various lysates were subjected to SDS PAGE followed by western blot with 17618-1-AP (SBDS antibody) at dilution of 1:1000 incubated at room temperature for 1.5 hours.



IP result of anti-SBDS (IP:17618-1-AP, 4ug; Detection:17618-1-AP 1:300) with HL-60 cells lysate 3040ug.



Immunohistochemical analysis of paraffin-embedded human pancreas cancer tissue slide using 17618-1-AP (SBDS antibody) at dilution of 1:200 (under 10x lens). Heat mediated antigen retrieval with Tris-EDTA buffer (pH 9.0).



Immunohistochemical analysis of paraffin-embedded human pancreas cancer tissue slide using 17618-1-AP (SBDS antibody) at dilution of 1:200 (under 40x lens). Heat mediated antigen retrieval with Tris-EDTA buffer (pH 9.0).