

For Research Use Only

NBPF3 Polyclonal antibody, PBS Only

Catalog Number:17606-1-PBS



Basic Information

Catalog Number:

17606-1-PBS

Concentration:

1 mg/ml

Source:

Rabbit

Isotype:

IgG

Immunogen Catalog Number:

AG11749

GenBank Accession Number:

BC024011

GeneID (NCBI):

84224

UNIPROT ID:

Q9H094

Full Name:

neuroblastoma breakpoint family,
member 3

Calculated MW:

338aa,38 kDa; 633aa,73 kDa

Observed MW:

32 kDa, 67-73 kDa

Purification Method:

Antigen affinity purification

Applications

Tested Applications:

WB, Indirect ELISA

Species Specificity:

human, mouse

Background Information

NBPF3 is a member of the neuroblastoma breakpoint family (NBPF) which consists of dozens of recently duplicated genes primarily located in segmental duplications on human chromosome 1. NBPF3 is located on chromosome 1p36 and expressed in a variety of tissues.

Storage

Storage:

Store at -80°C.

The product is shipped with ice packs. Upon receipt, store it immediately at -80°C

Storage Buffer:

PBS only, pH7.3

For technical support and original validation data for this product please contact:

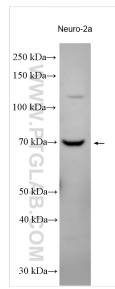
T: 4006900926

E: Proteintech-CN@ptglab.com

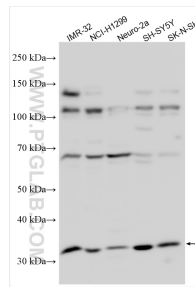
W: ptgcn.com

This product is exclusively available under Proteintech Group brand and is not available to purchase from any other manufacturer.

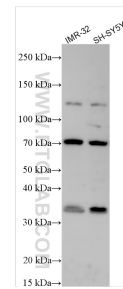
Selected Validation Data



Neuro-2a cells were subjected to SDS PAGE followed by western blot with 17606-1-AP (NBPF3 antibody) at dilution of 1:1000 incubated at room temperature for 1.5 hours. This data was developed using the same antibody clone with 17606-1-PBS in a different storage buffer formulation.



Various lysates were subjected to SDS PAGE followed by western blot with 17606-1-AP (NBPF3 antibody) at dilution of 1:2000 incubated at room temperature for 1.5 hours. This data was developed using the same antibody clone with 17606-1-PBS in a different storage buffer formulation.



Various lysates were subjected to SDS PAGE followed by western blot with 17606-1-AP (NBPF3 antibody) at dilution of 1:1000 incubated at room temperature for 1.5 hours. This data was developed using the same antibody clone with 17606-1-PBS in a different storage buffer formulation.