

For Research Use Only

FIGNL1 Polyclonal antibody

Catalog Number: 17604-1-AP

Featured Product

8 Publications



Basic Information

Catalog Number:

17604-1-AP

Source:

Rabbit

Isotype:

IgG

Immunogen Catalog Number:

AG11709

GenBank Accession Number:

BC051867

GeneID (NCBI):

63979

UNIPROT ID:

Q6PIW4

Full Name:

fidgetin-like 1

Calculated MW:

674 aa, 74 kDa

Observed MW:

66-71 kDa

Purification Method:

Antigen affinity purification

Recommended Dilutions:

WB: 1:500-1:2000

IP: 0.5-4.0 ug for 1.0-3.0 mg of total protein lysate

IF/ICC: 1:50-1:500

Applications

Tested Applications:

WB, IF/ICC, IP, ELISA

Cited Applications:

WB, IHC, IP, CoIP

Species Specificity:

human

Cited Species:

human, mouse

Positive Controls:

WB : HeLa cells, HuH-7 cells

IP : HeLa cells,

IF/ICC : HeLa cells,

Background Information

Fidgetin-like 1 (FIGNL1), a subfamily member of ATPases, is associated with diverse cellular activities (AAA proteins). FIGNL1 is involved in DNA repair. FIGNL1 plays a crucial role in the occurrence and development of malignant tumors. FIGNL1 participates in the prognosis, promoter methylation, and immune infiltrates in KIRP, LGG, and LIHC (PMID: 35232348).

Notable Publications

Author	Pubmed ID	Journal	Application
Jian Ma	28260065	Oncol Rep	WB
Miao Li	33367932	Int J Oncol	WB
Yunxing Xu	39319820	Balkan Med J	WB, IHC

Storage

Storage:

Store at -20°C. Stable for one year after shipment.

Storage Buffer:

PBS with 0.02% sodium azide and 50% glycerol, pH7.3

Aliquoting is unnecessary for -20°C storage

For technical support and original validation data for this product please contact:

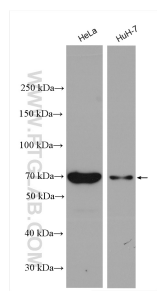
T: 4006900926

E: Proteintech-CN@ptglab.com

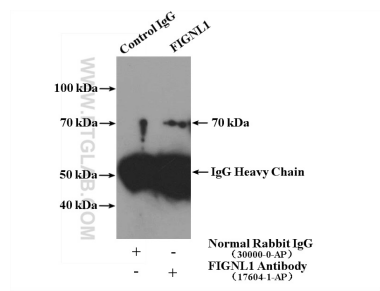
W: ptgcn.com

This product is exclusively available under Proteintech Group brand and is not available to purchase from any other manufacturer.

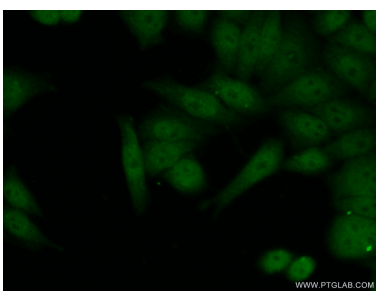
Selected Validation Data



Various lysates were subjected to SDS PAGE followed by western blot with 17604-1-AP (FIGNL1 antibody) at dilution of 1:1000 incubated at room temperature for 1.5 hours.



IP result of anti-FIGNL1 (IP:17604-1-AP, 4ug; Detection:17604-1-AP 1:1000) with HeLa cells lysate 2680ug.



Immunofluorescent analysis of (10% Formaldehyde) fixed HeLa cells using 17604-1-AP (FIGNL1 antibody) at dilution of 1:50 and Alexa Fluor 488-conjugated AffiniPure Goat Anti-Rabbit IgG(H+L).