

For Research Use Only

# MTMR15/FAN1 Polyclonal antibody, PBS Only

Catalog Number: 17600-1-PBS

Featured Product



## Basic Information

Catalog Number:

17600-1-PBS

Concentration:

1 mg/ml

Source:

Rabbit

Isotype:

IgG

Immunogen Catalog Number:

AG11651

GenBank Accession Number:

BC047882

GeneID (NCBI):

22909

UNIPROT ID:

Q9Y2M0

Full Name:

myotubularin related protein 15

Calculated MW:

60 kDa, 114 kDa

Observed MW:

63-68 kDa, 120-140 kDa

Purification Method:

Antigen affinity purification

## Applications

Tested Applications:

WB, IP, Indirect ELISA

Species Specificity:

human

## Background Information

MTMR15, also named as FAN1 and KIAA1018, is a nuclease required for the repair of DNA interstrand cross-links (ICL) recruited at sites of DNA damage by monoubiquitinated FANCD2. It is specifically involved in repair of ICL-induced DNA breaks by being required for efficient homologous recombination, probably in the resolution of homologous recombination intermediates. MTMR15 has some isoforms with MW 114 kDa and 60 kDa. The MW will be migrated to 120-140 kDa and 63-68 kDa with modification.

## Storage

Storage:

Store at -80°C.

**The product is shipped with ice packs. Upon receipt, store it immediately at -80°C**

Storage Buffer:

PBS only, pH7.3

For technical support and original validation data for this product please contact:

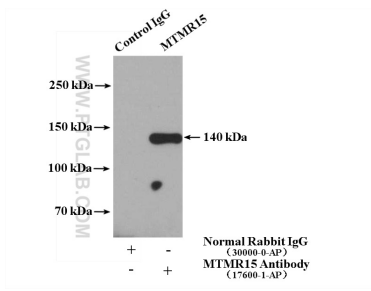
T: 4006900926

E: [Proteintech-CN@ptglab.com](mailto:Proteintech-CN@ptglab.com)

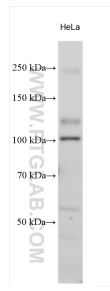
W: [ptgcn.com](http://ptgcn.com)

**This product is exclusively available under Proteintech Group brand and is not available to purchase from any other manufacturer.**

## Selected Validation Data



IP result of anti-MTMR15 (IP:17600-1-AP, 4ug; Detection:17600-1-AP 1:300) with HeLa cells lysate 2800 ug. This data was developed using the same antibody clone with 17600-1-PBS in a different storage buffer formulation.



Various lysates were subjected to SDS PAGE followed by western blot with 17600-1-AP (MTMR15 antibody) at dilution of 1:1000 incubated at room temperature for 1.5 hours. This data was developed using the same antibody clone with 17600-1-PBS in a different storage buffer formulation.