

For Research Use Only

# SMYD4 Polyclonal antibody, PBS Only

Catalog Number:17594-1-PBS

Featured Product



## Basic Information

Catalog Number:

17594-1-PBS

Size:

1 mg/ml

Source:

Rabbit

Isotype:

IgG

Immunogen Catalog Number:

AG11552

GenBank Accession Number:

BC035077

GeneID (NCBI):

114826

UNIPROT ID:

Q8IYR2

Full Name:

SET and MYND domain containing 4

Calculated MW:

804 aa, 89 kDa

Observed MW:

89 kDa

Purification Method:

Antigen affinity purification

## Applications

Tested Applications:

WB, IHC, IF/ICC, Indirect ELISA

Species Specificity:

human, rat

## Background Information

SMYD4, also named as SET and MYND domain-containing protein 4, is a 804 amino acid protein, which contains 1 MYND-type zinc finger and 1 SET domain. SMYD4 belongs to the class V-like SAM-binding methyltransferase superfamily. SMYD4, as a potential tumor suppressor, plays a critical role in breast carcinogenesis at least partly through inhibiting the expression of Pdgfr-alpha, and could be a novel target for improving treatment of breast cancer. SMYD4 is a muscle-specific transcriptional modulator involved in development.

## Storage

Storage:

Store at -80°C.

**The product is shipped with ice packs. Upon receipt, store it immediately at -80°C**

Storage Buffer:

PBS Only

For technical support and original validation data for this product please contact:

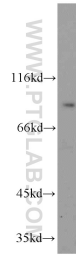
T: 4006900926

E: [Proteintech-CN@ptglab.com](mailto:Proteintech-CN@ptglab.com)

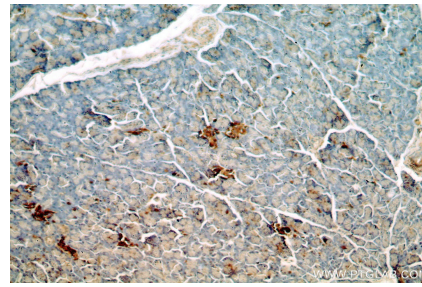
W: [ptgcn.com](http://ptgcn.com)

**This product is exclusively available under Proteintech Group brand and is not available to purchase from any other manufacturer.**

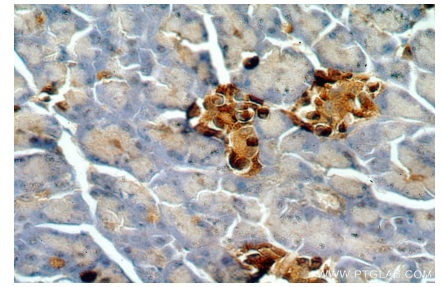
## Selected Validation Data



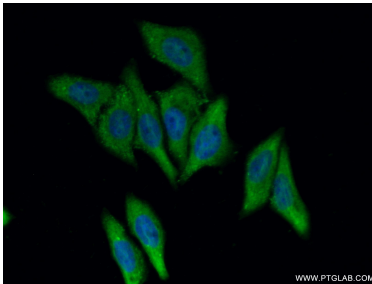
HepG2 cells were subjected to SDS PAGE followed by western blot with 17594-1-AP (SMYD4 antibody) at dilution of 1:300 incubated at room temperature for 1.5 hours. This data was developed using the same antibody clone with 17594-1-PBS in a different storage buffer formulation.



Immunohistochemical analysis of paraffin-embedded human pancreas using 17594-1-AP (SMYD4 antibody) at dilution of 1:50 (under 10x lens). This data was developed using the same antibody clone with 17594-1-PBS in a different storage buffer formulation.



Immunohistochemical analysis of paraffin-embedded human pancreas using 17594-1-AP (SMYD4 antibody) at dilution of 1:50 (under 40x lens). This data was developed using the same antibody clone with 17594-1-PBS in a different storage buffer formulation.



Immunofluorescent analysis of (-20°C Ethanol) fixed HepG2 cells using 17594-1-AP (SMYD4 antibody) at dilution of 1:50 and Alexa Fluor 488-conjugated AffiniPure Goat Anti-Rabbit IgG(H+L). This data was developed using the same antibody clone with 17594-1-PBS in a different storage buffer formulation.