

For Research Use Only

# RIPK3 Polyclonal antibody, PBS Only

Catalog Number: 17563-1-PBS



## Basic Information

Catalog Number:

17563-1-PBS

Concentration:

1 mg/ml

Source:

Rabbit

Isotype:

IgG

Immunogen Catalog Number:

AG11759

GenBank Accession Number:

BC062584

GeneID (NCBI):

11035

UNIPROT ID:

Q9Y572

Full Name:

receptor-interacting serine-threonine kinase 3

Calculated MW:

518 aa, 57 kDa

Observed MW:

57-70 kDa

Purification Method:

Antigen affinity purification

## Applications

Tested Applications:

WB, IHC, IF/ICC, IP, Indirect ELISA

Species Specificity:

human

## Background Information

RIPK3, also named as RIP3, a Ser/Thr kinase of RIP (Receptor Interacting Protein) family, is recruited to the TNFR1 signaling complex through RIP and has been shown to mediate apoptosis induction and NF- $\kappa$ B activation. RIPK3 is a nucleocytoplasmic shuttling protein and its unconventional nuclear localization signal (NLS, 442-472 aa) is sufficient to trigger apoptosis in the nucleus (PMID:18533105). It has 3 isoforms produced by alternative splicing. RIPK3 might form a homodimer within cells, and its apoptotic activity may not be required for this dimerization (PMID:18533105).

## Storage

Storage:

Store at -80°C.

**The product is shipped with ice packs. Upon receipt, store it immediately at -80°C**

Storage Buffer:

PBS Only

For technical support and original validation data for this product please contact:

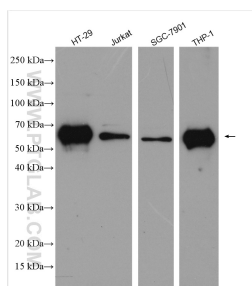
T: 4006900926

E: [Proteintech-CN@ptglab.com](mailto:Proteintech-CN@ptglab.com)

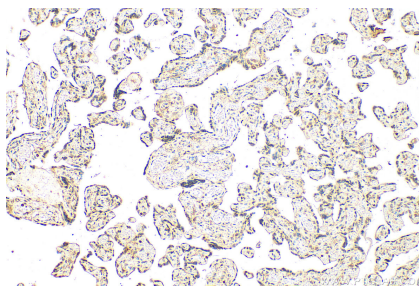
W: [ptgcn.com](http://ptgcn.com)

**This product is exclusively available under Proteintech Group brand and is not available to purchase from any other manufacturer.**

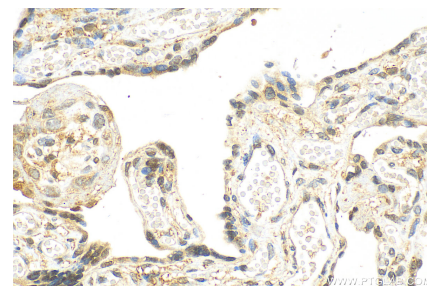
## Selected Validation Data



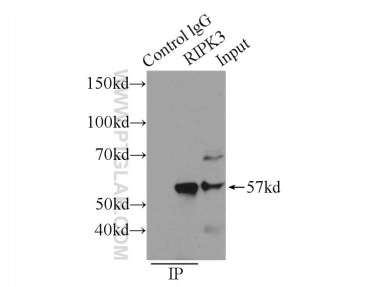
Various lysates were subjected to SDS PAGE followed by western blot with 17563-1-AP (RIP3 antibody) at dilution of 1:2000 incubated at room temperature for 1.5 hours. This data was developed using the same antibody clone with 17563-1-PBS in a different storage buffer formulation.



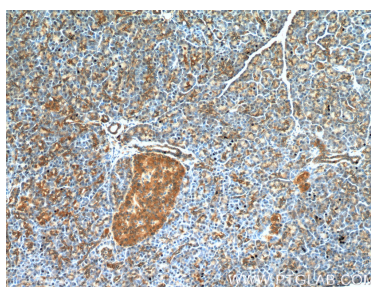
Immunohistochemical analysis of paraffin-embedded human placenta tissue slide using 17563-1-AP (RIP3 antibody) at dilution of 1:200 (under 10x lens). Heat mediated antigen retrieval with Tris-EDTA buffer (pH 9.0). This data was developed using the same antibody clone with 17563-1-PBS in a different storage buffer formulation.



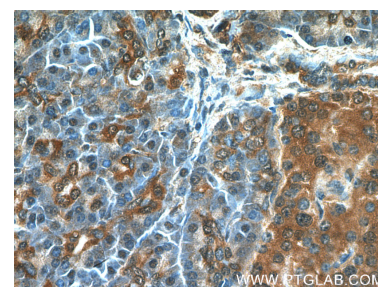
Immunohistochemical analysis of paraffin-embedded human placenta tissue slide using 17563-1-AP (RIP3 antibody) at dilution of 1:200 (under 40x lens). Heat mediated antigen retrieval with Tris-EDTA buffer (pH 9.0). This data was developed using the same antibody clone with 17563-1-PBS in a different storage buffer formulation.



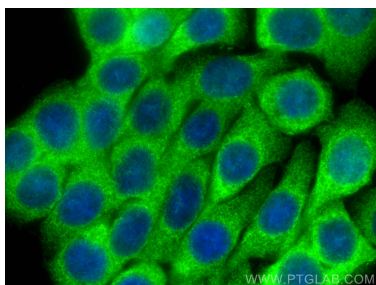
IP result of anti-RIP3 (IP: 17563-1-AP, 3ug; Detection: 17563-1-AP 1:300) with SW 1990 cells lysate 3000ug. This data was developed using the same antibody clone with 17563-1-PBS in a different storage buffer formulation.



Immunohistochemical analysis of paraffin-embedded human pancreas tissue slide using 17563-1-AP (RIP3 antibody) at dilution of 1:200 (under 10x lens). This data was developed using the same antibody clone with 17563-1-PBS in a different storage buffer formulation.



Immunohistochemical analysis of paraffin-embedded human pancreas tissue slide using 17563-1-AP (RIP3 antibody) at dilution of 1:200 (under 40x lens). This data was developed using the same antibody clone with 17563-1-PBS in a different storage buffer formulation.



Immunofluorescent analysis of (4% PFA) fixed HT-29 cells using RIP3 antibody (17563-1-AP) at dilution of 1:200 and CoraLite®488-Conjugated AffiniPure Goat Anti-Rabbit IgG(H+L). This data was developed using the same antibody clone with 17563-1-PBS in a different storage buffer formulation.