

For Research Use Only

# KATNA1 Polyclonal antibody

Catalog Number: 17560-1-AP

Featured Product

12 Publications



## Basic Information

### Catalog Number:

17560-1-AP

### Size:

500 ug/ml

### Source:

Rabbit

### Isotype:

IgG

### Immunogen Catalog Number:

AG11753

### GenBank Accession Number:

BC050428

### GeneID (NCBI):

11104

### UNIPROT ID:

O75449

### Full Name:

katanin p60 (ATPase-containing)

subunit A 1

### Calculated MW:

55 kDa

### Observed MW:

55-60 kDa

### Purification Method:

Antigen affinity purification

### Recommended Dilutions:

WB 1:1000-1:4000

IP 0.5-4.0 ug for 1.0-3.0 mg of total protein lysate

IHC 1:200-1:800

## Applications

### Tested Applications:

WB, IHC, IP, ELISA

### Cited Applications:

WB, IF

### Species Specificity:

human, mouse, rat

### Cited Species:

human, mouse, rat

### Positive Controls:

WB : HCT 116 cells, mouse brain tissue, rat brain tissue, HeLa cells

IP : mouse brain tissue,

IHC : human bowen disease,

**Note-IHC: suggested antigen retrieval with TE buffer pH 9.0; (\*) Alternatively, antigen retrieval may be performed with citrate buffer pH 6.0**

## Background Information

## Notable Publications

Author	Pubmed ID	Journal	Application
Dawn M Wenzel	36107470	Elife	IF
Lei Wang	34782749	Cell Res	IF
Jessica Eira	34820375	Front Cell Dev Biol	WB

## Storage

### Storage:

Store at -20°C. Stable for one year after shipment.

### Storage Buffer:

PBS with 0.02% sodium azide and 50% glycerol pH 7.3.

Aliquoting is unnecessary for -20°C storage

For technical support and original validation data for this product please contact:

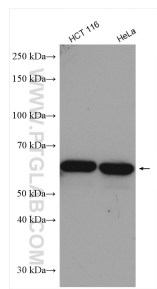
T: 4006900926

E: [Proteintech-CN@ptglab.com](mailto:Proteintech-CN@ptglab.com)

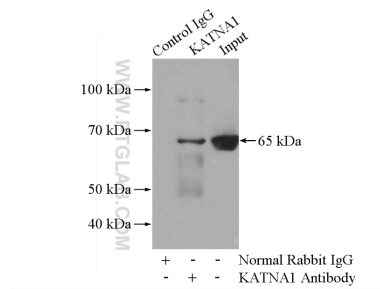
W: [ptgcn.com](http://ptgcn.com)

This product is exclusively available under Proteintech Group brand and is not available to purchase from any other manufacturer.

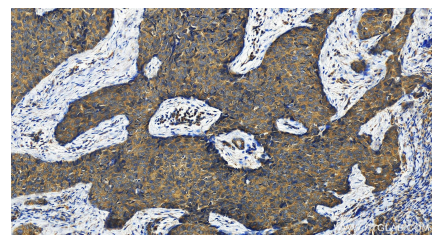
Selected Validation Data



Various lysates were subjected to SDS PAGE followed by western blot with 17560-1-AP (KATNA1 antibody) at dilution of 1:2000 incubated at room temperature for 1.5 hours.



IP result of anti-KATNA1 (IP:17560-1-AP, 4ug; Detection:17560-1-AP 1:500) with mouse brain tissue lysate 3440ug.



Immunohistochemical analysis of paraffin-embedded human bowen disease slide using 17560-1-AP (KATNA1 antibody) at dilution of 1:400 (under 20x lens). Heat mediated antigen retrieval with Tris-EDTA buffer (pH 9.0).