

PARP9 Polyclonal antibody

Catalog Number: 17535-1-AP

Featured Product

5 Publications

Basic Information

Catalog Number:

17535-1-AP

Size:

450 µg/ml

Source:

Rabbit

Isotype:

IgG

Immunogen Catalog Number:

AG11587

GenBank Accession Number:

BC039580

GeneID (NCBI):

83666

UNIPROT ID:

Q8IXQ6

Full Name:

poly (ADP-ribose) polymerase family, member 9

Calculated MW:

819 aa, 92 kDa

Observed MW:

88 kDa

Purification Method:

Antigen affinity purification

Recommended Dilutions:

WB 1:2000-1:12000

IP 0.5-4.0 µg for 1.0-3.0 mg of total protein lysate

IHC 1:20-1:200

Applications

Tested Applications:

IHC, IP, WB, ELISA

Cited Applications:

WB, IF

Species Specificity:

human, rat

Cited Species:

human, treeshrew

Note-IHC: suggested antigen retrieval with TE buffer pH 9.0; (*) Alternatively, antigen retrieval may be performed with citrate buffer pH 6.0

Positive Controls:

WB: Raji cells, THP-1 cells

IP: MCF-7 cells,

IHC: human spleen tissue, human skin tissue, human kidney tissue, human heart tissue, human lung tissue, human ovary tissue, human lymphoma tissue

Background Information

Poly(ADP-ribosyl)ation is a post-translational modification of proteins mediated by one of the 17 members of the poly(ADP-ribose) polymerases (PARP). PARP-9 belongs to the subfamily of macroPARPs, associating one to three macro domains to the PARP domain. Overexpression of PARP-9 stimulates cell migration in vitro, suggesting a role for PARP-9 in the promotion of malignant B cell migration and dissemination in high risk DLBCL. PARP-9 is also likely a transcription coactivator, its overexpression in B lymphocytes, stimulated by IFN γ , inducing the transcription of IFN γ -controlled genes.

Notable Publications

Author	Pubmed ID	Journal	Application
Ling Xu	32376647	J Immunol	IF, WB
Xinghong Tang	30128030	Oncol Lett	WB
Xinyi Wang	29456019	Mol Ther	WB

Storage

Storage:

Store at -20°C. Stable for one year after shipment.

Storage Buffer:

PBS with 0.02% sodium azide and 50% glycerol pH 7.3.

Aliquoting is unnecessary for -20°C storage

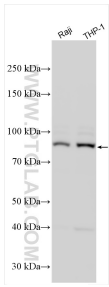
For technical support and original validation data for this product please contact:

T: 4006900926

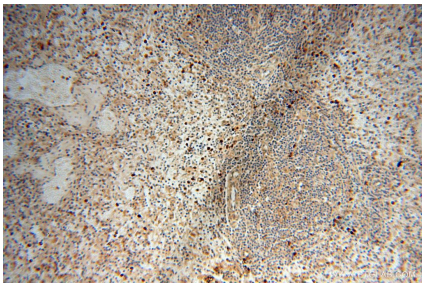
E: Proteintech-CN@ptglab.comW: ptgcn.com

This product is exclusively available under Proteintech Group brand and is not available to purchase from any other manufacturer.

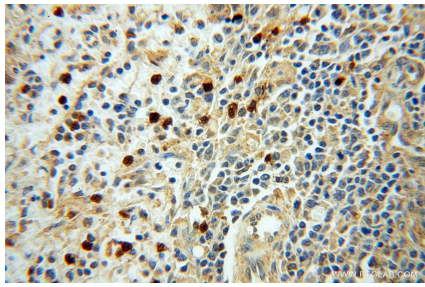
Selected Validation Data



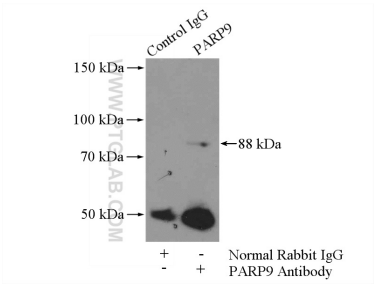
Various lysates were subjected to SDS PAGE followed by western blot with 17535-1-AP (PARP9 antibody) at dilution of 1:6000 incubated at room temperature for 1.5 hours.



Immunohistochemical analysis of paraffin-embedded human spleen using 17535-1-AP (PARP9 antibody) at dilution of 1:50 (under 10x lens).



Immunohistochemical analysis of paraffin-embedded human spleen using 17535-1-AP (PARP9 antibody) at dilution of 1:50 (under 40x lens).



IP result of anti-PARP9 (IP:17535-1-AP, 4ug; Detection:17535-1-AP 1:500) with MCF-7 cells lysate 4000ug.