

For Research Use Only

CTDSPL2 Polyclonal antibody, PBS Only

Catalog Number: 17532-1-PBS



Basic Information

Catalog Number:

17532-1-PBS

Size:

1 mg/ml

Source:

Rabbit

Isotype:

IgG

Immunogen Catalog Number:

AG11581

GenBank Accession Number:

BC035744

GeneID (NCBI):

51496

UNIPROT ID:

Q05D32

Full Name:

CTD (carboxy-terminal domain, RNA polymerase II, polypeptide A) small phosphatase like 2

Calculated MW:

466 aa, 53 kDa

Observed MW:

67 kDa

Purification Method:

Antigen affinity purification

Applications

Tested Applications:

WB, IHC, IF/ICC, IP, Indirect ELISA

Species Specificity:

human, mouse, rat

Background Information

CTD small phosphatase-like protein 2 (CTDSPL2) is also named as HSPC058 and HSPC129, belongs to the CTDSPL2 family. It is a putative RNA-polymerase II carboxy-terminal domain (CTD) phosphatase, whose specific CTD phosphatase activity was verified in vitro, and may regulate the dynamic phosphorylation of RNAP II CTD. (PMID: 17487459) It can obviously improve the expression of ϵ - and γ -globin genes in K562 cells and CD34+ cells derived from UCB. (PMID: 20932329) This antibody is a rabbit polyclonal antibody raised against a region of human CTDSPL2.

Storage

Storage:

Store at -80°C.

The product is shipped with ice packs. Upon receipt, store it immediately at -80°C

Storage Buffer:

PBS Only

For technical support and original validation data for this product please contact:

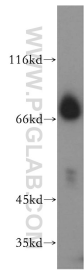
T: 4006900926

E: Proteintech-CN@ptglab.com

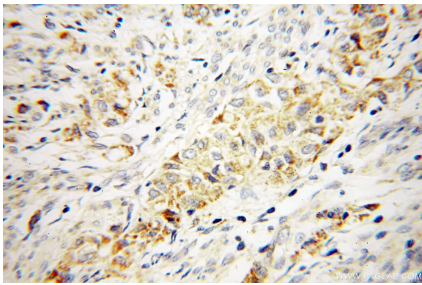
W: ptgcn.com

This product is exclusively available under Proteintech Group brand and is not available to purchase from any other manufacturer.

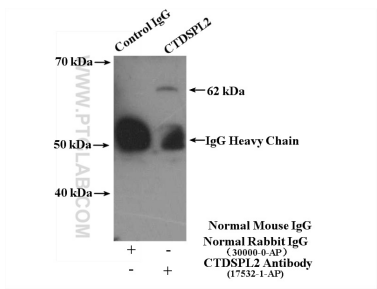
Selected Validation Data



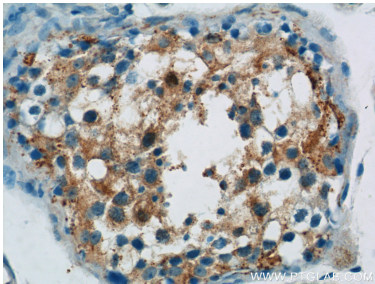
MCF7 cells were subjected to SDS PAGE followed by western blot with 17532-1-AP (CTDSPL2 antibody) at dilution of 1:500 incubated at room temperature for 1.5 hours. This data was developed using the same antibody clone with 17532-1-PBS in a different storage buffer formulation.



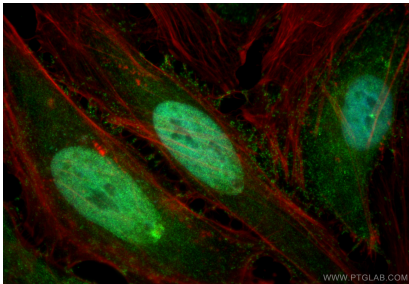
Immunohistochemical analysis of paraffin-embedded human endometrial cancer using 17532-1-AP (CTDSPL2 antibody) at dilution of 1:100 (under 40x lens). This data was developed using the same antibody clone with 17532-1-PBS in a different storage buffer formulation.



IP result of anti-CTDSPL2 (IP:17532-1-AP, 4ug; Detection:17532-1-AP 1:500) with mouse testis tissue lysate 4400ug. This data was developed using the same antibody clone with 17532-1-PBS in a different storage buffer formulation.



Immunohistochemical analysis of paraffin-embedded human testis tissue slide using 17532-1-AP (CTDSPL2 Antibody) at dilution of 1:50 (under 40x lens). This data was developed using the same antibody clone with 17532-1-PBS in a different storage buffer formulation.



Immunofluorescent analysis of (4% PFA) fixed HeLa cells using CTDSPL2 antibody (17532-1-AP) at dilution of 1:200 and Multi-rAb Coralite ® Plus 488-Goat Anti-Rabbit Recombinant Secondary Antibody (H+L) (RGAR002), CL594-phalloidin (red). This data was developed using the same antibody clone with 17532-1-PBS in a different storage buffer formulation.