

For Research Use Only

POLR3A Polyclonal antibody

Catalog Number: 17530-1-AP **1 Publications**



Basic Information

Catalog Number:

17530-1-AP

Size:

450 µg/ml

Source:

Rabbit

Isotype:

IgG

Immunogen Catalog Number:

AG11536

GenBank Accession Number:

BC041089

GeneID (NCBI):

11128

UNIPROT ID:

O14802

Full Name:

polymerase (RNA) III (DNA directed)
polypeptide A, 155kDa

Calculated MW:

1390 aa, 156 kDa

Observed MW:

140-150 kDa

Purification Method:

Antigen affinity purification

Recommended Dilutions:

WB 1:500-1:2000

IHC 1:50-1:500

Applications

Tested Applications:

IHC, WB, ELISA

Cited Applications:

WB, IP, IF

Species Specificity:

human, mouse, rat

Cited Species:

mouse

Note-IHC: suggested antigen retrieval with TE buffer pH 9.0; (*) Alternatively, antigen retrieval may be performed with citrate buffer pH 6.0

Positive Controls:

WB : HeLa cells, MCF-7 cells

IHC : mouse cerebellum tissue,

Background Information

Notable Publications

| Author | Pubmed ID | Journal | Application |
|----------|-----------|----------|-------------|
| Kai Tian | 37556328 | Cell Rep | WB,IF,IP |

Storage

Storage:

Store at -20°C. Stable for one year after shipment.

Storage Buffer:

PBS with 0.02% sodium azide and 50% glycerol pH 7.3.

Aliquoting is unnecessary for -20°C storage

For technical support and original validation data for this product please contact:

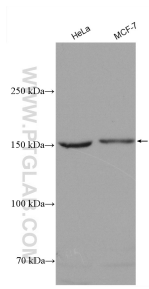
T: 4006900926

E: Proteintech-CN@ptglab.com

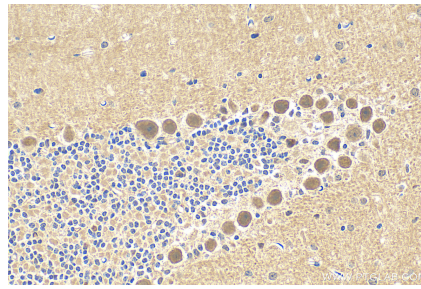
W: ptgcn.com

This product is exclusively available under Proteintech Group brand and is not available to purchase from any other manufacturer.

Selected Validation Data



Various lysates were subjected to SDS PAGE followed by western blot with 17530-1-AP (POLR3A antibody) at dilution of 1:1000 incubated at room temperature for 1.5 hours.



Immunohistochemical analysis of paraffin-embedded mouse cerebellum tissue slide using 17530-1-AP (POLR3A antibody) at dilution of 1:200 (under 40x lens). Heat mediated antigen retrieval with Tris-EDTA buffer (pH 9.0).