

CLUAP1 Polyclonal antibody

Catalog Number: 17470-1-AP

Featured Product

2 Publications

Basic Information

Catalog Number:

17470-1-AP

Size:

450 µg/ml

Source:

Rabbit

Isotype:

IgG

Immunogen Catalog Number:

AG11419

GenBank Accession Number:

BC017070

GeneID (NCBI):

23059

UNIPROT ID:

Q96AJ1

Full Name:

clusterin associated protein 1

Calculated MW:

413 aa, 48 kDa

Observed MW:

53 kDa

Purification Method:

Antigen affinity purification

Recommended Dilutions:

WB 1:500-1:1000

IP 0.5-4.0 µg for 1.0-3.0 mg of total protein lysate

IF/ICC 1:50-1:500

Applications

Tested Applications:

WB, IF/ICC, IP, ELISA

Cited Applications:

WB, IF

Species Specificity:

human, mouse, rat, canine

Cited Species:

human

Positive Controls:

WB : mouse testis tissue, COLO 320 cells, HepG2 cells, Y79 cells

IP : HepG2 cells,

IF/ICC : MDCK cells,

Background Information

CLUAP1 (Clusterin-associated protein 1) was originally identified as a protein that interacts with CLU/clusterin, and whose gene is frequently upregulated in colon cancer (PMID: 15480429). Overexpression of CLUAP1 was also observed in osteosarcoma (PMID: 17203229). CLUAP1 is most abundantly expressed in testis among normal tissues (PMID: 15480429; 17203229). Studies reveal that CLUAP1 has a role in ciliogenesis and cilia-dependent development (PMID: 23351563; 23742838; 24970261).

Notable Publications

Author	Pubmed ID	Journal	Application
Tomoharu Kanie	28625565	Dev Cell	WB
Tina Beyer	29615496	Mol Cell Proteomics	WB,IF

Storage

Storage:

Store at -20°C. Stable for one year after shipment.

Storage Buffer:

PBS with 0.02% sodium azide and 50% glycerol pH 7.3.

Aliquoting is unnecessary for -20°C storage

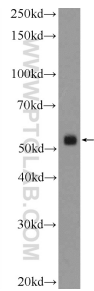
For technical support and original validation data for this product please contact:

T: 4006900926

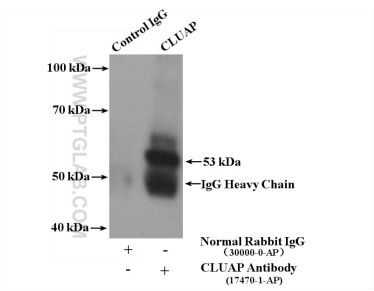
E: Proteintech-CN@ptglab.comW: ptgcn.com

This product is exclusively available under Proteintech Group brand and is not available to purchase from any other manufacturer.

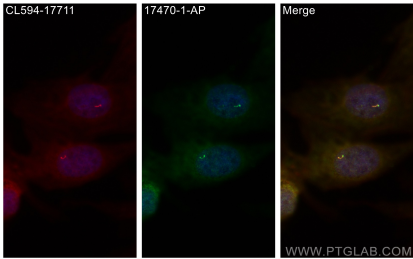
Selected Validation Data



mouse testis tissue were subjected to SDS PAGE followed by western blot with 17470-1-AP (CLUAP1 Antibody) at dilution of 1:600 incubated at room temperature for 1.5 hours.



IP result of anti-CLUAP1 (IP:17470-1-AP, 4ug; Detection:17470-1-AP 1:600) with HepG2 cells lysate 2400ug.



Immunofluorescent analysis of (4% PFA) fixed MDCK cells using CLUAP1 antibody (17470-1-AP) at dilution of 1:200 and CoraLite®488-Conjugated AffiniPure Goat Anti-Rabbit IgG(H+L) (SA00013-2), CoraLite®594 ARL13B antibody (CL594-17711, red).