

For Research Use Only

PPIL6 Polyclonal antibody

Catalog Number: 17452-1-AP **2 Publications**



Basic Information

Catalog Number:

17452-1-AP

Size:

300 µg/ml

Source:

Rabbit

Isotype:

IgG

Immunogen Catalog Number:

AG11578

GenBank Accession Number:

BC038716

GeneID (NCBI):

285755

UNIPROT ID:

Q8IXY8

Full Name:

peptidylprolyl isomerase
(cyclophilin)-like 6

Calculated MW:

311 aa, 35 kDa

Observed MW:

30 kDa

Purification Method:

Antigen affinity purification

Recommended Dilutions:

WB 1:500-1:2400

IF 1:50-1:500

Applications

Tested Applications:

IF/ICC, WB, ELISA

Cited Applications:

WB

Species Specificity:

human, mouse, rat

Cited Species:

mouse

Positive Controls:

WB : HeLa cells, HepG2 cells

IF : HeLa cells,

Background Information

Notable Publications

Author	Pubmed ID	Journal	Application
Yanjie Ma	38038747	Cell Mol Life Sci	WB
Chao Liu	37494937	Curr Biol	WB

Storage

Storage:

Store at -20°C. Stable for one year after shipment.

Storage Buffer:

PBS with 0.02% sodium azide and 50% glycerol pH 7.3.

Aliquoting is unnecessary for -20°C storage

For technical support and original validation data for this product please contact:

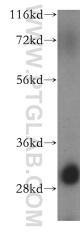
T: 4006900926

E: Proteintech-CN@ptglab.com

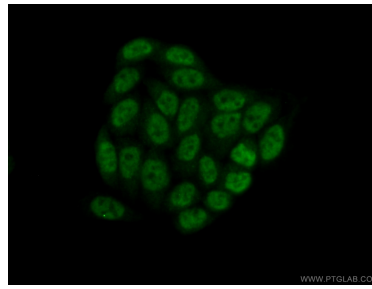
W: ptgcn.com

This product is exclusively available under Proteintech Group brand and is not available to purchase from any other manufacturer.

Selected Validation Data



HeLa cells were subjected to SDS PAGE followed by western blot with 17452-1-AP (PPIL6 antibody) at dilution of 1:500 incubated at room temperature for 1.5 hours.



Immunofluorescent analysis of (10% Formaldehyde) fixed HeLa cells using 17452-1-AP (PPIL6 antibody) at dilution of 1:50 and Alexa Fluor 488-conjugated AffiniPure Goat Anti-Rabbit IgG(H+L).