

For Research Use Only

Transferrin/TF Polyclonal antibody, PBS Only



Catalog Number: 17435-1-PBS

Featured Product

Basic Information

Catalog Number:

17435-1-PBS

Size:

1 mg/ml

Source:

Rabbit

Isotype:

IgG

Immunogen Catalog Number:

AG11504

GenBank Accession Number:

BC059367

GeneID (NCBI):

7018

UNIPROT ID:

P02787

Full Name:

transferrin

Calculated MW:

698 aa, 77 kDa

Observed MW:

77 kDa

Purification Method:

Antigen affinity purification

Applications

Tested Applications:

WB, IHC, IF/ICC, IF-P, Indirect ELISA

Species Specificity:

human, mouse, rat

Background Information

Serotransferrin(TF) is a 77 kDa secreted protein which is also named as transferrin, siderophilin, beta-1 metal-binding globulin and belongs to a family of homologous iron-binding glycoproteins that encompasses lactoferrin (found both intracellular and in secretions, including milk), melanotransferrin (present on melanoma cells) and ovotransferrin (present in egg white). TF is a multi-function protein with a primary role in transporting iron in a safe, redox-inactive state from absorption to utilization or storage sites around the body. The association of Tf with the immune system derives from its ability to restrict serum free-iron levels, creating low-iron environments where the infection capacity of pathogenic microorganisms is limited. TF is expressed predominantly in the liver and secreted in plasma, but lower amounts can be synthesized in other tissues such as the brain and the testis.

Storage

Storage:

Store at -80°C.

The product is shipped with ice packs. Upon receipt, store it immediately at -80°C

Storage Buffer:

PBS Only

For technical support and original validation data for this product please contact:

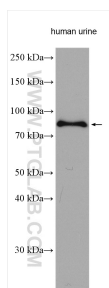
T: 4006900926

E: Proteintech-CN@ptglab.com

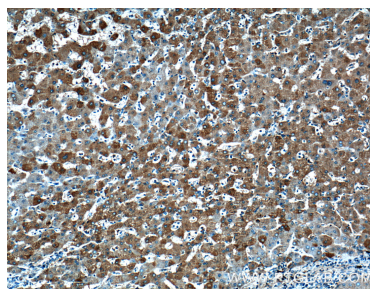
W: ptgcn.com

This product is exclusively available under Proteintech Group brand and is not available to purchase from any other manufacturer.

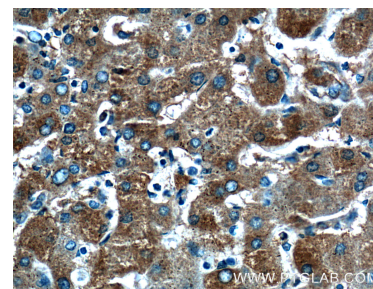
Selected Validation Data



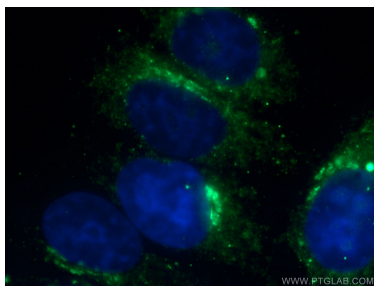
human urine lysates were subjected to SDS PAGE followed by western blot with 17435-1-AP (Transferrin antibody) at dilution of 1:1000 incubated at room temperature for 1.5 hours. This data was developed using the same antibody clone with 17435-1-PBS in a different storage buffer formulation.



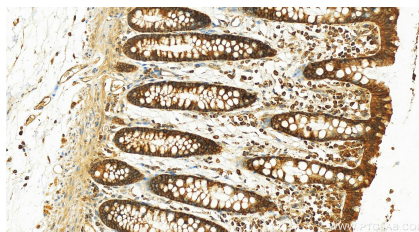
Immunohistochemical analysis of paraffin-embedded human hepatocirrhosis tissue slide using 17435-1-AP (Transferrin antibody at dilution of 1:200 (under 10x lens). This data was developed using the same antibody clone with 17435-1-PBS in a different storage buffer formulation.



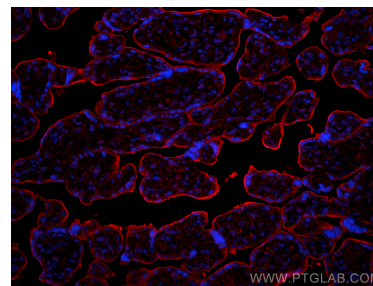
Immunohistochemical analysis of paraffin-embedded human hepatocirrhosis tissue slide using 17435-1-AP (Transferrin antibody at dilution of 1:200 (under 40x lens). This data was developed using the same antibody clone with 17435-1-PBS in a different storage buffer formulation.



Immunofluorescent analysis of (-20°C Ethanol) fixed HepG2 cells using 17435-1-AP (Transferrin antibody) at dilution of 1:50 and Alexa Fluor 488-conjugated AffiniPure Goat Anti-Rabbit IgG(H+L). This data was developed using the same antibody clone with 17435-1-PBS in a different storage buffer formulation.



Immunohistochemical analysis of paraffin-embedded human normal colon slide using 17435-1-AP (Transferrin antibody) at dilution of 1:200 (under 20x lens). Heat mediated antigen retrieval with Tris-EDTA buffer (pH 9.0). This data was developed using the same antibody clone with 17435-1-PBS in a different storage buffer formulation.



Immunofluorescent analysis of (4% PFA) fixed paraffin-embedded human placenta tissue using Transferrin/TF antibody (17435-1-AP) at dilution of 1:400 and CoraLite®594-Conjugated Goat Anti-Rabbit IgG(H+L) (SA00013-4). Heat mediated antigen retrieval with Tris-EDTA buffer (pH 9.0). This data was developed using the same antibody clone with 17435-1-PBS in a different storage buffer formulation.