

For Research Use Only

# MAGT1 Polyclonal antibody, PBS Only

Catalog Number: 17430-1-PBS

Featured Product



## Basic Information

Catalog Number:

17430-1-PBS

Source:

Rabbit

Isotype:

IgG

Immunogen Catalog Number:

AG11496

GenBank Accession Number:

BC060842

GeneID (NCBI):

84061

UNIPROT ID:

Q9HOU3

Full Name:

magnesium transporter 1

Calculated MW:

335 aa, 38 kDa

Observed MW:

45-47 kDa

Purification Method:

Antigen affinity purification

## Applications

Tested Applications:

WB, IHC, IF/ICC, IF-P, Indirect ELISA

Species Specificity:

human, mouse, rat

## Background Information

MAGT1 is a mammalian Mg<sup>2+</sup>-selective transporter being required for cellular magnesium uptake and vertebrate embryonic development. It possesses five putative transmembrane (TM) regions with a cleavage site, a N-glycosylation site, and a number of phosphorylation sites. Recently mutations in MAGT1 has been found to be associated with a novel X-linked human immunodeficiency. The MAGT1 protein was undetectable in the patients' cells by western blot or immunofluorescent cell surface staining. MAGT1 had been detected as 38 kDa (PMID: 18705540) or 45-47 kDa (PMID: 27383987) by western blot.

## Storage

Storage:

Store at -80°C.

The product is shipped with ice packs. Upon receipt, store it immediately at -80°C

Storage Buffer:

PBS only, pH7.3

For technical support and original validation data for this product please contact:

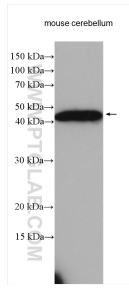
T: 4006900926

E: [Proteintech-CN@ptglab.com](mailto:Proteintech-CN@ptglab.com)

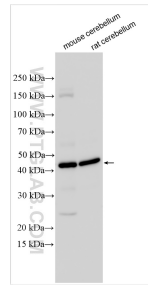
W: [ptgcn.com](http://ptgcn.com)

This product is exclusively available under Proteintech Group brand and is not available to purchase from any other manufacturer.

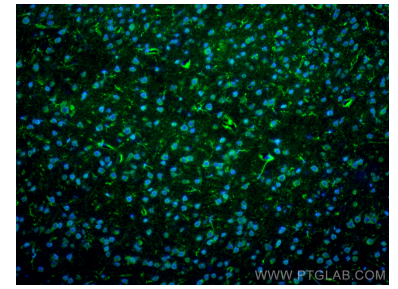
## Selected Validation Data



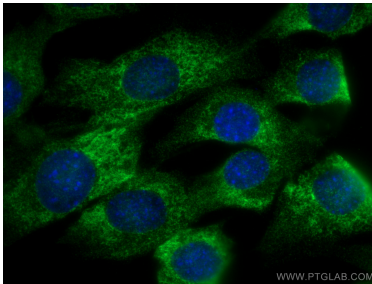
Mouse cerebellum lysates were subjected to SDS PAGE followed by western blot with 17430-1-AP (MAGT1 antibody) at dilution of 1:1000 incubated at room temperature for 1.5 hours. This data was developed using the same antibody clone with 17430-1-PBS in a different storage buffer formulation.



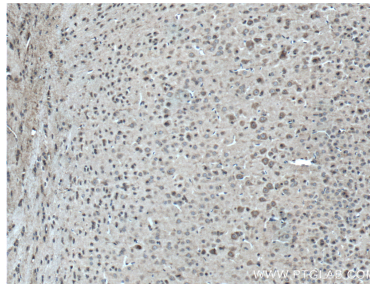
Various lysates were subjected to SDS PAGE followed by western blot with 17430-1-AP (MAGT1 antibody) at dilution of 1:500 incubated at room temperature for 1.5 hours. This data was developed using the same antibody clone with 17430-1-PBS in a different storage buffer formulation.



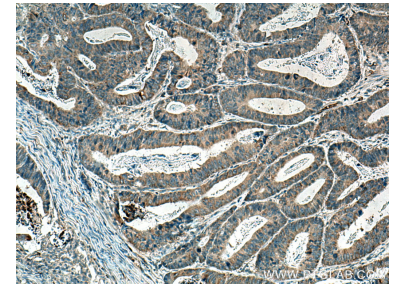
Immunofluorescent analysis of (4% PFA) fixed paraffin-embedded mouse brain tissue using MAGT1 antibody (17430-1-AP) at dilution of 1:400 and CoraLite®488-Conjugated Goat Anti-Rabbit IgG(H+L) (SA00013-2), Histone H3 antibody (68345-1-Ig, Clone: 1A2A3, blue). Heat mediated antigen retrieval with Tris-EDTA buffer (pH 9.0). This data was developed using the same antibody clone with 17430-1-PBS in a different storage buffer formulation.



Immunofluorescent analysis of (4% PFA) fixed C2C12 cells using MAGT1 antibody (17430-1-AP) at dilution of 1:200 and CoraLite®488-Conjugated AffiniPure Goat Anti-Rabbit IgG(H+L). This data was developed using the same antibody clone with 17430-1-PBS in a different storage buffer formulation.



Immunohistochemical analysis of paraffin-embedded mouse brain tissue slide using 17430-1-AP (MAGT1 Antibody) at dilution of 1:200 (under 10x lens). Heat mediated antigen retrieval with Tris-EDTA buffer (pH 9.0). This data was developed using the same antibody clone with 17430-1-PBS in a different storage buffer formulation.



Immunohistochemical analysis of paraffin-embedded human colon cancer tissue slide using 17430-1-AP (MAGT1 antibody) at dilution of 1:200 (under 10x lens). Heat mediated antigen retrieval with Tris-EDTA buffer (pH 9.0). This data was developed using the same antibody clone with 17430-1-PBS in a different storage buffer formulation.