

PLCL2 Polyclonal antibody

Catalog Number: 17421-1-AP

2 Publications

Basic Information

Catalog Number:

17421-1-AP

Size:

500 µg/ml

Source:

Rabbit

Isotype:

IgG

Immunogen Catalog Number:

AG11443

GenBank Accession Number:

BC036392

GeneID (NCBI):

23228

UNIPROT ID:

Q9UPRO

Full Name:

phospholipase C-like 2

Calculated MW:

126 kDa

Observed MW:

126 kDa

Purification Method:

Antigen affinity purification

Recommended Dilutions:

WB 1:1000-1:3000

IF-P 1:50-1:500

Applications

Tested Applications:

IF/ICC, WB, ELISA

Cited Applications:

WB

Species Specificity:

human, mouse, rat

Cited Species:

mouse

Positive Controls:

WB : mouse brain tissue, rat brain tissue

IF-P : mouse brain tissue,

Background Information

PLCL2, a novel phospholipase C-like protein, is expressed in lymphocytes and platelets. The expression of PLCL2 is associated with the proliferation of mature B cells in the immune system. PLCL2 is a new susceptibility loci for myocardial infarction. It has been shown that PLCL2 plays a key role in the pathogenesis of atherosclerosis and systemic sclerosis. There are three isoforms of PLCL2 protein and 17421-1-AP antibody detects the 126 kDa band in SDS-PAGE. (PMID: 24916648, 25880423)

Notable Publications

Author	Pubmed ID	Journal	Application
Vanitha Bala	25404917	Front Physiol	WB
Mary C Peavey	33707208	Proc Natl Acad Sci U S A	WB

Storage

Storage:

Store at -20°C. Stable for one year after shipment.

Storage Buffer:

PBS with 0.02% sodium azide and 50% glycerol pH 7.3.

Aliquoting is unnecessary for -20°C storage

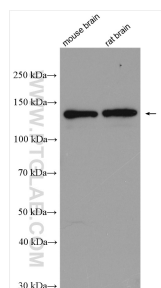
For technical support and original validation data for this product please contact:

T: 4006900926

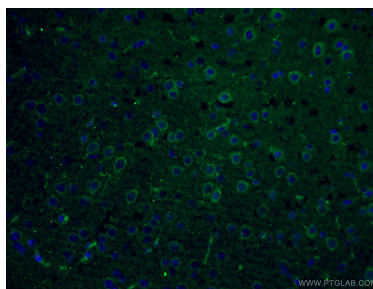
E: Proteintech-CN@ptglab.comW: ptgcn.com

This product is exclusively available under Proteintech Group brand and is not available to purchase from any other manufacturer.

Selected Validation Data



Various lysates were subjected to SDS PAGE followed by western blot with 17421-1-AP (PLCL2 antibody) at dilution of 1:2000 incubated at room temperature for 1.5 hours.



Immunofluorescent analysis of (4% PFA) fixed mouse brain tissue using 17421-1-AP (PLCL2 antibody) at dilution of 1:50 and CoraLite488-Conjugated AffiniPure Goat Anti-Rabbit IgG(H+L).