

For Research Use Only

EVI2A Polyclonal antibody, PBS Only

Catalog Number:17415-1-PBS



Basic Information

Catalog Number:

17415-1-PBS

Size:

1 mg/ml

Source:

Rabbit

Isotype:

IgG

Immunogen Catalog Number:

AG11075

GenBank Accession Number:

BC035572

GeneID (NCBI):

2123

UNIPROT ID:

P22794

Full Name:

ecotropic viral integration site 2A

Calculated MW:

236 aa, 26 kDa

Observed MW:

26 kDa

Purification Method:

Antigen affinity purification

Applications

Tested Applications:

WB, IHC, IF/ICC, Indirect ELISA

Species Specificity:

human

Background Information

Storage

Storage:

Store at -80°C.

The product is shipped with ice packs. Upon receipt, store it immediately at -80°C

Storage Buffer:

PBS Only

For technical support and original validation data for this product please contact:

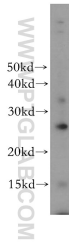
T: 4006900926

E: Proteintech-CN@ptglab.com

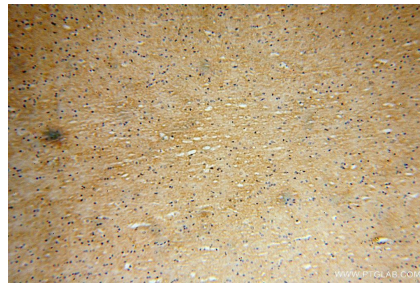
W: ptgcn.com

This product is exclusively available under Proteintech Group brand and is not available to purchase from any other manufacturer.

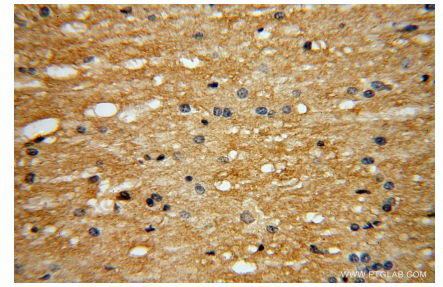
Selected Validation Data



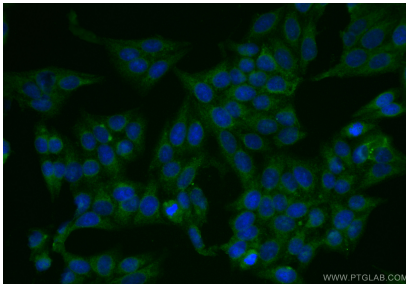
human brain tissue were subjected to SDS PAGE followed by western blot with 17415-1-AP (EVI2A antibody) at dilution of 1:300 incubated at room temperature for 1.5 hours. This data was developed using the same antibody clone with 17415-1-PBS in a different storage buffer formulation.



Immunohistochemical analysis of paraffin-embedded human brain using 17415-1-AP (EVI2A antibody) at dilution of 1:100 (under 10x lens). This data was developed using the same antibody clone with 17415-1-PBS in a different storage buffer formulation.



Immunohistochemical analysis of paraffin-embedded human brain using 17415-1-AP (EVI2A antibody) at dilution of 1:100 (under 40x lens). This data was developed using the same antibody clone with 17415-1-PBS in a different storage buffer formulation.



Immunofluorescent analysis of (-20°C Ethanol) fixed HepG2 cells using EVI2A antibody (17415-1-AP) at dilution of 1:200 and CoraLite®488-Conjugated Goat Anti-Rabbit IgG(H+L) (SA00013-2). This data was developed using the same antibody clone with 17415-1-PBS in a different storage buffer formulation.